

## CK-18 Polyclonal Antibody

Catalog No. E-AB-40299

**Note:** Centrifuge before opening to ensure complete recovery of vial contents.

### Description

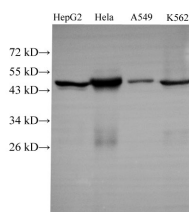
<b>Reactivity</b>	Human, Mouse
<b>Immunogen</b>	Recombinant Mouse Krt18 protein
<b>Host</b>	Rabbit
<b>Isotype</b>	IgG
<b>Purification</b>	Antigen Affinity Purification
<b>Conjugation</b>	Unconjugated
<b>Buffer</b>	PBS with 0.05% Proclin300 and 50% glycerol, pH7.4.

### Applications

### Recommended Dilution

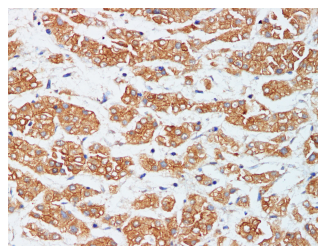
<b>WB</b>	1:1000-1:2000
<b>IHC</b>	1:100-1:300

### Data

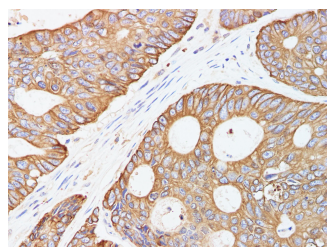


Western Blot analysis of HepG2, HeLa, A549 and k562 using CK-18 Polyclonal Antibody at dilution of 1:1000

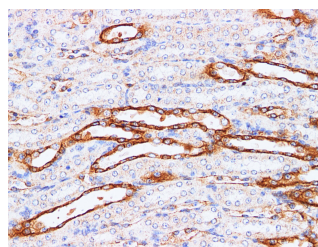
**Observed Mw:48kDa**  
**Calculated Mw:48kDa**



Immunohistochemistry of paraffin-embedded Human liver cancer using CK-18 Polyclonal Antibody at dilution of 1:200



Immunohistochemistry of paraffin-embedded Human colorectal cancer using CK-18 Polyclonal Antibody at dilution of 1:200



Immunohistochemistry of paraffin-embedded Mouse kidney using CK-18 Polyclonal Antibody at dilution of 1:200

### Preparation & Storage

#### For Research Use Only

**Storage** Store at -20°C. Avoid freeze / thaw cycles.

## Background

Cytokeratin 18 (CK18) has a molecular weight of 45 KDa, which is a low molecular weight type A cytokeratin. It is a marker of simple epithelium, including glandular epithelium. The stratified squamous epithelium is generally negative. CK18 is mainly used in the diagnosis of adenocarcinoma.