

## PE/Cyanine5 Anti-Mouse CD11c Antibody[N418]

<b>Catalog No.</b>	E-AB-F0991G	<b>Reactivity</b>	Mouse
<b>Storage</b>	Store at 2~8°C, Avoid freeze / thaw cycles	<b>Applications</b>	FCM

**Important Note:** Centrifuge before opening to ensure complete recovery of vial contents.

### Antigen Information

<b>Alternate Names</b>	Integrin alpha-X, Itgax, CD11 antigen-like family member C, Leukocyte adhesion receptor p150+95, CD11c
<b>Uniprot ID</b>	Q9QXH4
<b>Background</b>	CD11c is a 150 kD glycoprotein also known as $\alpha$ X integrin, CR4, and p150. CD11c forms a $\alpha$ X $\beta$ 2 heterodimer with $\beta$ 2 integrin (CD18). It is primarily expressed on dendritic cells, NK cells, a subset of intestinal intraepithelial lymphocytes (IEL), and some activated T cells. The $\alpha$ X $\beta$ 2 integrin plays an important role in cell-cell contact by binding its ligands: iC3b, fibrinogen and CD54.

### Product Details

<b>Form</b>	Liquid
<b>Size</b>	50Tests/100Tests/100Tests×2
<b>Clone No.</b>	N418
<b>Host</b>	Armenian Hamster
<b>Isotype</b>	Armenian Hamster IgG
<b>Reactivity</b>	Mouse
<b>Application</b>	FCM
<b>Isotype Control</b>	<a href="#">[Product E-AB-F09852G]</a>
<b>Storage Buffer</b>	Phosphate buffered solution, pH 7.2, containing 0.09% stabilizer and 1% protein protectant.
<b>Shipping</b>	Biological ice pack at 4 °C
<b>Stability &amp; Storage</b>	Keep as concentrated solution. Store at 2~8°C and protected from prolonged exposure to light. Do not freeze. This product is guaranteed up to one year from purchase.

## Fluorophore

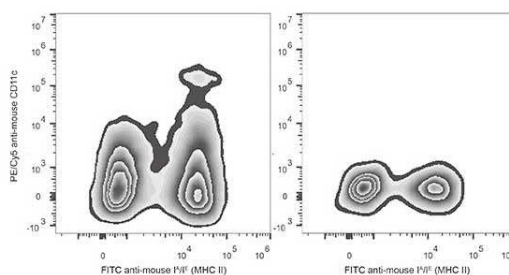
**Conjugation:** PE/Cyanine5

PE/Cyanine5 is designed to be excited by the Blue (488 nm), Green (532 nm) and yellow-green (561 nm) lasers and detected using an optical filter centered near 670 nm (e.g., a 690/50 nm bandpass filter).

## Recommended usage

Each lot of this antibody is quality control tested by flow cytometric analysis. **The amount of the reagent is suggested to be used 5 µL of antibody per test (million cells in 100 µL staining volume or per 100 µL of whole blood).** Please check your vial before the experiment. Since applications vary, the appropriate dilutions must be determined for individual use.

## Product data



C57BL/6 murine splenocytes are stained with PE/Cyanine5 Anti-Mouse CD11c Antibody and FITC Anti-Mouse MHC II (I-A/I-E) Antibody (Left). Splenocytes stained with FITC Anti-Mouse MHC II (I-A/I-E) Antibody (Right) are used as control.

## Related Information

1. Sample Preparation for Flow Cytometry <https://www.elabscience.com/List-detail-5594.html>
2. Staining Cell Surface Targets for Flow Cytometry <https://www.elabscience.com/List-detail-5568.html>
3. Flow Cytometry Troubleshooting Tips <https://www.elabscience.com/List-detail-5593.html>
4. How to select the appropriate detection channel through the spectrogram? <https://www.elabscience.com/List-detail-459742.html>