

APC Anti-Human CD11c Antibody[BU15]

| | | | |
|--------------------|--|---------------------|-------|
| Catalog No. | E-AB-F1118E | Reactivity | Human |
| Storage | Store at 2~8°C, Avoid freeze / thaw cycles | Applications | FCM |

Important Note: Centrifuge before opening to ensure complete recovery of vial contents.

Antigen Information

| | |
|------------------------|--|
| Alternate Names | Integrin alpha-X, Itgax, CD11 antigen-like family member C, Leukocyte adhesion receptor p150+95, CD11c |
| Uniprot ID | P20702 |
| Background | CD11c is a 145-150 kD type I transmembrane glycoprotein also known as integrin α X and CR4. CD11c non-covalently associates with integrin β 2 (CD18) and is expressed on monocytes/macrophages, dendritic cells, granulocytes, NK cells, and subsets of T and B cells. CD11c has been reported to play a role in adhesion and CTL killing through its interactions with fibrinogen, CD54, and iC3b. |

Product Details

| | |
|--------------------------------|---|
| Form | Liquid |
| Size | 20Tests/100Tests/100Tests×2 |
| Clone No. | BU15 |
| Host | Mouse |
| Isotype | Mouse IgG1, κ |
| Reactivity | Human |
| Application | FCM |
| Isotype Control | APC Mouse IgG1, κ Isotype Control[MOPC-21] [Product E-AB-F09792E] |
| Storage Buffer | Phosphate buffered solution, pH 7.2, containing 0.09% stabilizer and 1% protein protectant. |
| Shipping | Biological ice pack at 4 °C |
| Stability & Storage | Keep as concentrated solution. Store at 2~8°C and protected from prolonged exposure to light. Do not freeze. This product is guaranteed up to one year from purchase. |

For Research Use Only

Fluorophore

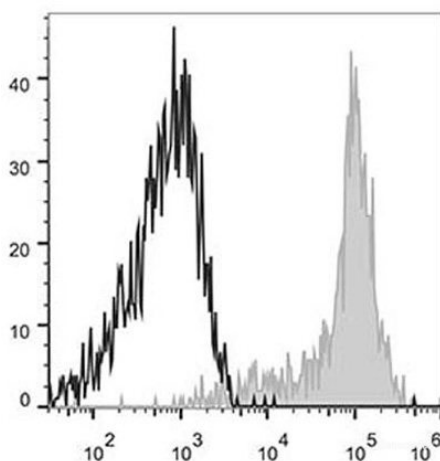
Conjugation: APC

APC is designed to be excited by the Red (627-640 nm) laser and detected using an optical filter centered near 660 nm (e.g., a 660/20 nm bandpass filter).

Recommended usage

Each lot of this antibody is quality control tested by flow cytometric analysis. **The amount of the reagent is suggested to be used 5 μ L of antibody per test (million cells in 100 μ L staining volume or per 100 μ L of whole blood).** Please check your vial before the experiment. Since applications vary, the appropriate dilutions must be determined for individual use.

Product data



Human peripheral blood are stained with APC Anti-Human CD11c Antibody (filled gray histogram). Cells in the monocyte gate were used for analysis. Unstained cells (empty black histogram) are used as control.

Related Information

1. Sample Preparation for Flow Cytometry <https://www.elabscience.com/List-detail-5594.html>
2. Staining Cell Surface Targets for Flow Cytometry <https://www.elabscience.com/List-detail-5568.html>
3. Flow Cytometry Troubleshooting Tips <https://www.elabscience.com/List-detail-5593.html>
4. How to select the appropriate detection channel through the spectrogram? <https://www.elabscience.com/List-detail-459742.html>