

## FITC Anti-Mouse CD48 Antibody[HM48-1]

<b>Catalog No.</b>	E-AB-F1017C	<b>Reactivity</b>	Mouse
<b>Storage</b>	Store at 2~8°C, Avoid freeze / thaw cycles	<b>Applications</b>	FCM

**Important Note:** Centrifuge before opening to ensure complete recovery of vial contents.

### Antigen Information

<b>Alternate Names</b>	CD48 antigen,Cd48,BCM1 surface antigen,BLAST-1,HM48-1,MRC OX-45 surface antigen,SLAMF2,sgp-60,CD48
<b>Uniprot ID</b>	P18181
<b>Background</b>	CD48 is a 45 kD GPI-anchored glycoprotein also known as BCM1, Blast-1 (human), and OX-45 (rat). It is a member of the Ig superfamily, expressed on T and B cells and monocytes/macrophages. It plays a role in adhesion and T cell recognition. The primary ligands for CD48 are CD2 and CD244.

### Product Details

<b>Form</b>	Liquid
<b>Size</b>	50Tests/100Tests/100Tests×2
<b>Clone No.</b>	HM48-1
<b>Host</b>	Armenian Hamster
<b>Isotype</b>	Armenian Hamster IgG
<b>Reactivity</b>	Mouse
<b>Application</b>	FCM
<b>Isotype Control</b>	<a href="#">FITC Armenian Hamster IgG Isotype Control[PIP] [Product E-AB-F09852C]</a>
<b>Storage Buffer</b>	Phosphate buffered solution, pH 7.2, containing 0.09% stabilizer and 1% protein protectant.
<b>Shipping</b>	Biological ice pack at 4 °C
<b>Stability &amp; Storage</b>	Keep as concentrated solution. Store at 2~8°C and protected from prolonged exposure to light.Do not freeze. This product is guaranteed up to one year from purchase.

## Fluorophore

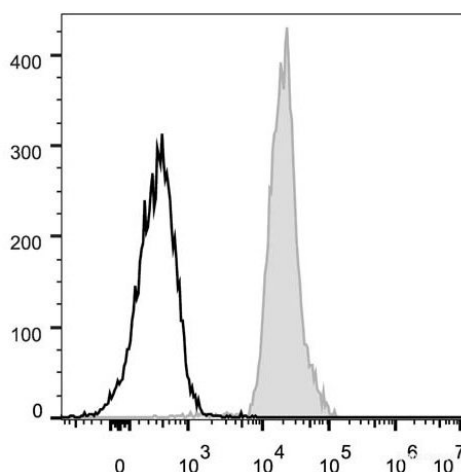
**Conjugation:** FITC

FITC is designed to be excited by the Blue laser (488 nm) and detected using an optical filter centered near 530 nm (e.g., a 525/40 nm bandpass filter).

## Recommended usage

Each lot of this antibody is quality control tested by flow cytometric analysis. **The amount of the reagent is suggested to be used 5  $\mu$ L of antibody per test (million cells in 100  $\mu$ L staining volume or per 100  $\mu$ L of whole blood).** Please check your vial before the experiment. Since applications vary, the appropriate dilutions must be determined for individual use.

## Product data



C57BL/6 murine splenocytes are stained with FITC Anti-Mouse CD48 Antibody (filled gray histogram). Unstained splenocytes (empty black histogram) are used as control.

## Related Information

1. Sample Preparation for Flow Cytometry <https://www.elabscience.com/List-detail-5594.html>
2. Staining Cell Surface Targets for Flow Cytometry <https://www.elabscience.com/List-detail-5568.html>
3. Flow Cytometry Troubleshooting Tips <https://www.elabscience.com/List-detail-5593.html>
4. How to select the appropriate detection channel through the spectrogram? <https://www.elabscience.com/List-detail-459742.html>