

## FITC Anti-Human CD5 Antibody[UCHT2]

<b>Catalog No.</b>	E-AB-F1041C	<b>Reactivity</b>	Human
<b>Storage</b>	Store at 2~8°C, Avoid freeze / thaw cycles	<b>Applications</b>	FCM

**Important Note:** Centrifuge before opening to ensure complete recovery of vial contents.

### Antigen Information

<b>Alternate Names</b>	T-cell surface glycoprotein CD5,CD5,Lymphocyte antigen T1/Leu-1,LEU1
<b>Uniprot ID</b>	P06127
<b>Background</b>	CD5 is a 67 kD single chain type I glycoprotein also known as Leu-1, Ly-1 and T1. It is a member of the scavenger receptor superfamily found on T cells, thymocytes, B cell subsets, chronic B lymphocytic leukemia (B-Cells), and peripheral blood dendritic cells. CD5 modulates T and B cell receptor signaling, thymocyte maturation, and T-B cell interactions upon binding to ligands such as CD72.

### Product Details

<b>Form</b>	Liquid
<b>Size</b>	20Tests/100Tests/100Tests×2
<b>Clone No.</b>	UCHT2
<b>Host</b>	Mouse
<b>Isotype</b>	Mouse IgG1, κ
<b>Reactivity</b>	Human
<b>Application</b>	FCM
<b>Isotype Control</b>	<a href="#">FITC Mouse IgG1, κ Isotype Control[MOPC-21] [Product E-AB-F09792C]</a>
<b>Storage Buffer</b>	Phosphate buffered solution, pH 7.2, containing 0.09% stabilizer and 1% protein protectant.
<b>Shipping</b>	Biological ice pack at 4 °C
<b>Stability &amp; Storage</b>	Keep as concentrated solution. Store at 2~8°C and protected from prolonged exposure to light.Do not freeze. This product is guaranteed up to one year from purchase.

## Fluorophore

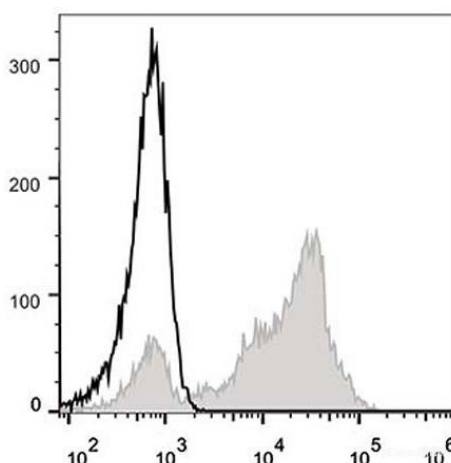
**Conjugation:** FITC

FITC is designed to be excited by the Blue laser (488 nm) and detected using an optical filter centered near 530 nm (e.g., a 525/40 nm bandpass filter).

## Recommended usage

Each lot of this antibody is quality control tested by flow cytometric analysis. **The amount of the reagent is suggested to be used 5  $\mu$ L of antibody per test (million cells in 100  $\mu$ L staining volume or per 100  $\mu$ L of whole blood).** Please check your vial before the experiment. Since applications vary, the appropriate dilutions must be determined for individual use.

## Product data



Human peripheral blood lymphocytes are stained with FITC Anti-Human CD5 Antibody (filled gray histogram).  
Unstained lymphocytes (empty black histogram) are used as control.

## Related Information

1. Sample Preparation for Flow Cytometry <https://www.elabscience.com/List-detail-5594.html>
2. Staining Cell Surface Targets for Flow Cytometry <https://www.elabscience.com/List-detail-5568.html>
3. Flow Cytometry Troubleshooting Tips <https://www.elabscience.com/List-detail-5593.html>
4. How to select the appropriate detection channel through the spectrogram? <https://www.elabscience.com/List-detail-459742.html>