

PE Anti-Human CD11a Antibody[TS1/22.1.1.13]

Catalog No.	E-AB-F1055D	Reactivity	Human
Storage	Store at 2~8°C, Avoid freeze / thaw cycles	Applications	FCM

Important Note: Centrifuge before opening to ensure complete recovery of vial contents.

Antigen Information

Alternate Names	Integrin alpha-L, Itgal, CD11 antigen-like family member A, LFA-1A, Lymphocyte antigen 15, Ly-15, CD11a
Uniprot ID	P20701
Background	CD11a is a 170-180 kD type I transmembrane glycoprotein also known as LFA-1 α chain and integrin α L subunit. CD11a non-covalently associates with integrin β 2 (CD18) to form LFA-1. It is expressed on all leukocytes, including B and T lymphocytes, monocytes, macrophages, neutrophils, basophils and eosinophils. It is absent on non-hematopoietic tissues and platelets. CD11a plays a central role in leukocyte cell-cell interactions and is important in lymphocyte costimulation. CD11a/CD18 binds to ICAM-1 (CD54), ICAM-2 (CD102), and ICAM-3 (CD50).

Product Details

Form	Liquid
Size	20Tests/100Tests/100Tests \times 2
Clone No.	TS1/22.1.1.13
Host	Mouse
Isotype	Mouse IgG1, κ
Reactivity	Human
Application	FCM
Isotype Control	PE Mouse IgG1, κ Isotype Control [MOPC-21] [Product E-AB-F09792D]
Storage Buffer	Phosphate buffered solution, pH 7.2, containing 0.09% stabilizer and 1% protein protectant.
Shipping	Biological ice pack at 4 °C
Stability & Storage	Keep as concentrated solution. Store at 2~8°C and protected from prolonged exposure to light. Do not freeze. This product is guaranteed up to one year from purchase.

For Research Use Only

Fluorophore

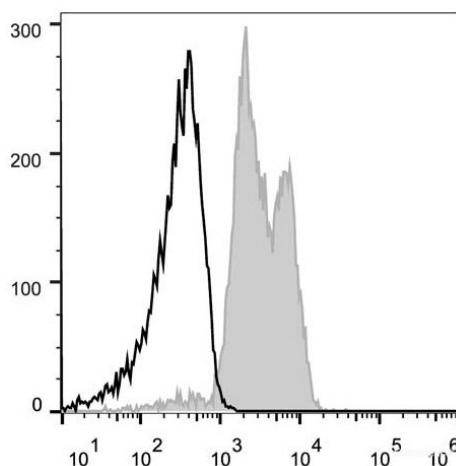
Conjugation: PE

PE is designed to be excited by the Blue (488 nm), Green (532 nm) and Yellow-Green (561 nm) lasers and detected using an optical filter centered near 575 nm (e.g., a 585/42 nm bandpass filter).

Recommended usage

Each lot of this antibody is quality control tested by flow cytometric analysis. **The amount of the reagent is suggested to be used 5 μ L of antibody per test (million cells in 100 μ L staining volume or per 100 μ L of whole blood).** Please check your vial before the experiment. Since applications vary, the appropriate dilutions must be determined for individual use.

Product data



Human peripheral blood lymphocytes are stained with PE Anti-Human CD11a Antibody (filled gray histogram).
Unstained lymphocytes (empty black histogram) are used as control.

Related Information

1. Sample Preparation for Flow Cytometry <https://www.elabscience.com/List-detail-5594.html>
2. Staining Cell Surface Targets for Flow Cytometry <https://www.elabscience.com/List-detail-5568.html>
3. Flow Cytometry Troubleshooting Tips <https://www.elabscience.com/List-detail-5593.html>
4. How to select the appropriate detection channel through the spectrogram? <https://www.elabscience.com/List-detail-459742.html>