

APC Anti-Human CD18 Antibody[TS1/18.1.2.11]

| | | | |
|--------------------|--|---------------------|-------|
| Catalog No. | E-AB-F1057E | Reactivity | Human |
| Storage | Store at 2~8°C, Avoid freeze / thaw cycles | Applications | FCM |

Important Note: Centrifuge before opening to ensure complete recovery of vial contents.

Antigen Information

| | |
|------------------------|---|
| Alternate Names | Integrin beta-2,Itgb2,Cell surface adhesion glycoproteins LFA-1/CR3/p150+95 subunit beta,Complement receptor C3 subunit beta,CD18 |
| Uniprot ID | P05107 |
| Background | CD18 is a 90-95 kD type I transmembrane protein also known as integrin β 2 subunit, LFA-1 β subunit, and β 2 integrin. CD18 non-covalently associates with CD11a, CD11b or CD11c. CD18 is expressed on all leukocytes. CD18 and associated α chains function in adhesion and signaling in hematopoietic cells. |

Product Details

| | |
|--------------------------------|--|
| Form | Liquid |
| Size | 20Tests/100Tests/100Tests \times 2 |
| Clone No. | TS1/18.1.2.11 |
| Host | Mouse |
| Isotype | Mouse IgG1, κ |
| Reactivity | Human |
| Application | FCM |
| Isotype Control | APC Mouse IgG1, κ Isotype Control[MOPC-21] [Product E-AB-F09792E] |
| Storage Buffer | Phosphate buffered solution, pH 7.2, containing 0.09% stabilizer and 1% protein protectant. |
| Shipping | Biological ice pack at 4 °C |
| Stability & Storage | Keep as concentrated solution. Store at 2~8°C and protected from prolonged exposure to light.Do not freeze. This product is guaranteed up to one year from purchase. |

For Research Use Only

Fluorophore

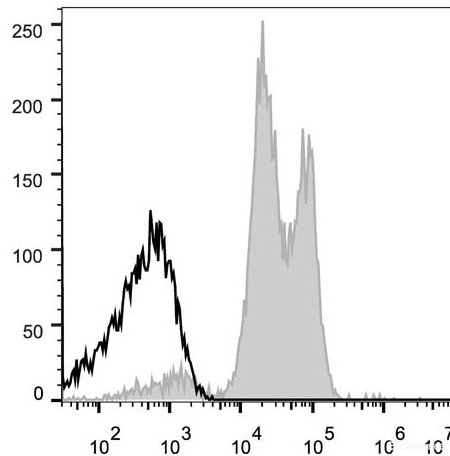
Conjugation: APC

APC is designed to be excited by the Red (627-640 nm) laser and detected using an optical filter centered near 660 nm (e.g., a 660/20 nm bandpass filter).

Recommended usage

Each lot of this antibody is quality control tested by flow cytometric analysis. **The amount of the reagent is suggested to be used 5 µL of antibody per test (million cells in 100 µL staining volume or per 100 µL of whole blood).** Please check your vial before the experiment. Since applications vary, the appropriate dilutions must be determined for individual use.

Product data



Human peripheral blood lymphocytes are stained with APC Anti-Human CD18 Antibody (filled gray histogram).
Unstained lymphocytes (empty black histogram) are used as control.

Related Information

1. Sample Preparation for Flow Cytometry <https://www.elabscience.com/List-detail-5594.html>
2. Staining Cell Surface Targets for Flow Cytometry <https://www.elabscience.com/List-detail-5568.html>
3. Flow Cytometry Troubleshooting Tips <https://www.elabscience.com/List-detail-5593.html>
4. How to select the appropriate detection channel through the spectrogram? <https://www.elabscience.com/List-detail-459742.html>

For Research Use Only