

**Elab Fluor® 488 Anti-Human CD15/SSEA-1 Antibody[HI98]**

<b>Catalog No.</b>	E-AB-F1079L	<b>Reactivity</b>	Human
<b>Storage</b>	Store at 2~8°C, Avoid freeze / thaw cycles	<b>Applications</b>	FCM

**Important Note:** Centrifuge before opening to ensure complete recovery of vial contents.

**Antigen Information**

<b>Alternate Names</b>	Lewis X, 3-FAL, 3-FL, LNFP III, Lex , SSEA-1, X-hapten
<b>Background</b>	CD15 is 3-fucosyl-N-acetyllactosamine (3-FAL), also known as Lewis X, 3-FAL, X-hapten, and SSEA-1. CD15 is expressed on granulocytes and monocytes. It has also been shown to be expressed on Langerhans cells and some malignant cells. CD15 has been implicated in adhesion, as well as chemotaxis, phagocytosis, and bactericidal activity.

**Product Details**

<b>Form</b>	Liquid
<b>Size</b>	20Tests/100Tests/100Tests×2
<b>Clone No.</b>	HI98
<b>Host</b>	Mouse
<b>Isotype</b>	Mouse IgM, κ
<b>Reactivity</b>	Human
<b>Application</b>	FCM
<b>Isotype Control</b>	<a href="#">Elab Fluor® 488 Mouse IgM, κ Isotype Control[MM-30] [Product E-AB-F09782L]</a>
<b>Storage Buffer</b>	Phosphate buffered solution, pH 7.2, containing 0.09% stabilizer and 1% protein protectant.
<b>Shipping</b>	Biological ice pack at 4 °C
<b>Stability &amp; Storage</b>	Keep as concentrated solution. Store at 2~8°C and protected from prolonged exposure to light.Do not freeze. This product is guaranteed up to one year from purchase.

**For Research Use Only**

## Fluorophore

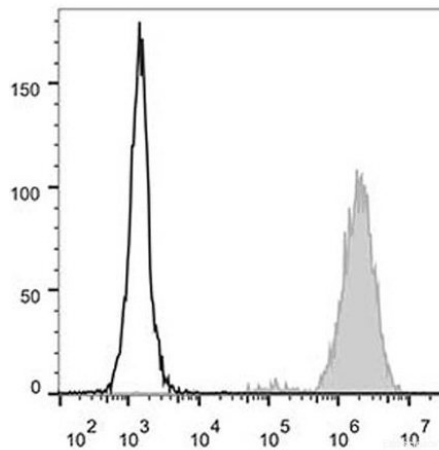
**Conjugation:** Elab Fluor® 488

Elab Fluor® 488 is designed to be excited by the Blue laser (488 nm) and detected using an optical filter centered near 520 nm (e.g., a 525/40 nm bandpass filter).

## Recommended usage

Each lot of this antibody is quality control tested by flow cytometric analysis. **The amount of the reagent is suggested to be used 5 µL of antibody per test (million cells in 100 µL staining volume or per 100 µL of whole blood).** Please check your vial before the experiment. Since applications vary, the appropriate dilutions must be determined for individual use.

## Product data



Human peripheral blood granulocytes are stained with Elab Fluor® 488 Anti-Human CD15 Antibody (filled gray histogram). Unstained granulocytes (empty black histogram) are used as control.

## Related Information

1. Sample Preparation for Flow Cytometry <https://www.elabscience.com/List-detail-5594.html>
2. Staining Cell Surface Targets for Flow Cytometry <https://www.elabscience.com/List-detail-5568.html>
3. Flow Cytometry Troubleshooting Tips <https://www.elabscience.com/List-detail-5593.html>
4. How to select the appropriate detection channel through the spectrogram? <https://www.elabscience.com/List-detail-459742.html>