

# Recombinant Human Reticulocalbin 3/RCN3 Protein (aa 21-328, His Tag)



Catalog Number:PKSH033292

**Note:** Centrifuge before opening to ensure complete recovery of vial contents.

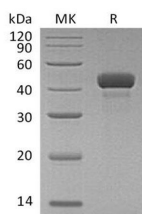
## Description

<b>Synonyms</b>	Reticulocalbin-3;EF-Hand Calcium-Binding Protein RLP49;RCN3
<b>Species</b>	Human
<b>Expression Host</b>	HEK293 Cells
<b>Sequence</b>	Lys21-Leu328
<b>Accession</b>	Q96D15
<b>Calculated Molecular Weight</b>	36.2 kDa
<b>Observed molecular weight</b>	43 kDa
<b>Tag</b>	C-His

## Properties

<b>Purity</b>	> 95 % as determined by reducing SDS-PAGE.
<b>Endotoxin</b>	< 1.0 EU per µg of the protein as determined by the LAL method.
<b>Storage</b>	Store at < -20°C, stable for 6 months. Please minimize freeze-thaw cycles.
<b>Shipping</b>	This product is provided as liquid. It is shipped at frozen temperature with blue ice/gel packs. Upon receipt, store it immediately at < - 20°C.
<b>Formulation</b>	Supplied as a 0.2 µm filtered solution of 20mM Tris-HCl, 150mM NaCl, 1mM DTT, 10% Glycerol, pH 7.4.
<b>Reconstitution</b>	Not Applicable

## Data



> 95 % as determined by reducing SDS-PAGE.

## Background

Reticulocalbin-3 is a member of the CREC family that is involved in the secretory pathway. Members of the CREC family consist of a number of multiple EF-hand domains. Reticulocalbin-3 localizes to the endoplasmic reticulum lumen. The bioinformatic analysis of Reticulocalbin-3 reveal that it is a putative Ca<sup>2+</sup>-binding protein. In addition; it has been shown that autoactivation and secretion of PACE4 was increased upon co-expression with Reticulocalbin-3. The proPACE4-RCN-3 complex is plays an important role in the biosynthesis of PACE4.

## For Research Use Only

A Reliable Research Partner in Life Science and Medicine

Toll-free: 1-888-852-8623

Web: [www.elabscience.com](http://www.elabscience.com)

Tel: 1-832-243-6086

Email: [techsupport@elabscience.com](mailto:techsupport@elabscience.com)

Fax: 1-832-243-6017