

Recombinant Human Calumenin Protein (aa 20-315, His Tag)



Catalog Number:PKSH033293

Note: Centrifuge before opening to ensure complete recovery of vial contents.

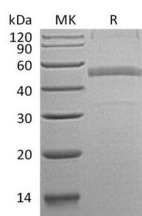
Description

Synonyms	Calumenin;Crocabin;IEF SSP 9302;CALU
Species	Human
Expression Host	HEK293 Cells
Sequence	Lys20-Phe315
Accession	O43852
Calculated Molecular Weight	36.0 kDa
Observed molecular weight	40-55 kDa
Tag	C-His

Properties

Purity	> 82 % as determined by reducing SDS-PAGE.
Endotoxin	< 1.0 EU per µg of the protein as determined by the LAL method.
Storage	Generally, lyophilized proteins are stable for up to 12 months when stored at -20 to -80°C. Reconstituted protein solution can be stored at 4-8°C for 2-7 days. Aliquots of reconstituted samples are stable at < -20°C for 3 months.
Shipping	This product is provided as lyophilized powder which is shipped with ice packs.
Formulation	Lyophilized from a 0.2 µm filtered solution of 20mM PB, 150mM NaCl, pH 7.4. Normally 5 % - 8 % trehalose, mannitol and 0.01% Tween80 are added as protectants before lyophilization. Please refer to the specific buffer information in the printed man
Reconstitution	Please refer to the printed manual for detailed information.

Data



> 82 % as determined by reducing SDS-PAGE.

Background

Calumenin is a secreted calcium-binding protein that belongs to the CREC family. Calumenin contains six EF-hand domains and is expressed at high levels in the heart; placenta and skeletal muscle. Human Calumenin is synthesized as a 315 amino acid precursor that contains a 19 amino acid signal sequence; and a 296 amino acid mature chain. Calumenin localizes to the endoplasmic reticulum (ER) and sarcoplasmic reticulum (SR) of mammalian tissues which plays a role in ER functions as protein folding and sorting. Calumenin is involved in the regulation of vitamin K-dependent carboxylation of multiple N-terminal glutamate residues. It seems to inhibit γ -carboxylase GGCX.

For Research Use Only

A Reliable Research Partner in Life Science and Medicine

Toll-free: 1-888-852-8623

Web: www.elabscience.com

Tel: 1-832-243-6086

Email: techsupport@elabscience.com

Fax: 1-832-243-6017