

Recombinant Human LRG1 Protein (His Tag)

Catalog Number:PKSH033295



Note: Centrifuge before opening to ensure complete recovery of vial contents.

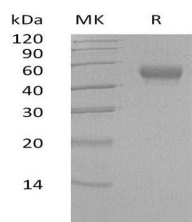
Description

Synonyms	Leucine-rich alpha-2-glycoprotein;HMFT1766;LRG;LRG1
Species	Human
Expression Host	HEK293 Cells
Sequence	Val36-Gln347
Accession	AAH34389.1
Calculated Molecular Weight	35.4 kDa
Observed molecular weight	40-60 kDa
Tag	C-His

Properties

Purity	> 95 % as determined by reducing SDS-PAGE.
Endotoxin	< 1.0 EU per µg of the protein as determined by the LAL method.
Storage	Generally, lyophilized proteins are stable for up to 12 months when stored at -20 to -80°C. Reconstituted protein solution can be stored at 4-8°C for 2-7 days. Aliquots of reconstituted samples are stable at < -20°C for 3 months.
Shipping	This product is provided as lyophilized powder which is shipped with ice packs.
Formulation	Lyophilized from a 0.2 µm filtered solution of 20mM Tris-HCl, 20mM NaCl, pH 7.5. Normally 5 % - 8 % trehalose, mannitol and 0.01 % Tween80 are added as protectants before lyophilization. Please refer to the specific buffer information in the printe
Reconstitution	Please refer to the printed manual for detailed information.

Data



> 95 % as determined by reducing SDS-PAGE.

Background

Leucine-rich alpha-2-glycoprotein is a secreted protein and contains 8 LRR (leucine-rich) repeats and 1 LRRCT domain. The leucine-rich repeat (LRR) family of proteins; including LRG1; have been shown to be involved in protein-protein interaction; signal transduction; and cell adhesion and development. LRG1 is expressed during granulocyte differentiation. Levels of the LRG protein are markedly elevated in acute appendicitis and therefore could be used as a diagnostic aid.

For Research Use Only

A Reliable Research Partner in Life Science and Medicine

Toll-free: 1-888-852-8623

Web: www.elabscience.com

Tel: 1-832-243-6086

Email: techsupport@elabscience.com

Fax: 1-832-243-6017