

# Recombinant Human TEM8/ATR Protein (His Tag)

Catalog Number:PKSH033297



**Note:** Centrifuge before opening to ensure complete recovery of vial contents.

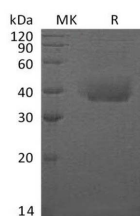
## Description

<b>Synonyms</b>	Anthrax Toxin Receptor 1;Tumor Endothelial Marker 8;ANTXR1;ATR;TEM8
<b>Species</b>	Human
<b>Expression Host</b>	HEK293 Cells
<b>Sequence</b>	Glu33-Lys321
<b>Accession</b>	Q9H6X2-4
<b>Calculated Molecular Weight</b>	33.6 kDa
<b>Observed molecular weight</b>	35-45 kDa
<b>Tag</b>	C-His

## Properties

<b>Purity</b>	> 95 % as determined by reducing SDS-PAGE.
<b>Endotoxin</b>	< 1.0 EU per µg of the protein as determined by the LAL method.
<b>Storage</b>	Generally, lyophilized proteins are stable for up to 12 months when stored at -20 to -80°C. Reconstituted protein solution can be stored at 4-8°C for 2-7 days. Aliquots of reconstituted samples are stable at < -20°C for 3 months.
<b>Shipping</b>	This product is provided as lyophilized powder which is shipped with ice packs.
<b>Formulation</b>	Lyophilized from a 0.2 µm filtered solution of 20mM PB, 150mM NaCl, pH 7.4. Normally 5 % - 8 % trehalose, mannitol and 0.01% Tween80 are added as protectants before lyophilization. Please refer to the specific buffer information in the printed man
<b>Reconstitution</b>	Please refer to the printed manual for detailed information.

## Data



> 95 % as determined by reducing SDS-PAGE.

## Background

Anthrax Toxin Receptor 1 (ANTXR1) is a single-pass type I membrane protein that belongs to the ATR family. ANTXR1 contains one VWFA domain and binds PA through the VWA domain. ANTXR1 is highly expressed in tumor endothelial cells. ANTXR1 plays a role in cell attachment and migration. ANTXR1 interacts with extracellular matrix proteins and the actin cytoskeleton; it mediates adhesion of cells to type 1 collagen and gelatin; reorganization of the actin cytoskeleton and promotes cell spreading. It is also involved in the angiogenic response of cultured umbilical vein endothelial cells; up-regulated in cultured angiogenic umbilical vein endothelial cells. Defects in ANTXR1 are associated with susceptibility to hemangioma capillary infantile (HCI).

## For Research Use Only

A Reliable Research Partner in Life Science and Medicine

Toll-free: 1-888-852-8623

Web: [www.elabscience.com](http://www.elabscience.com)

Tel: 1-832-243-6086

Email: [techsupport@elabscience.com](mailto:techsupport@elabscience.com)

Fax: 1-832-243-6017