

# Recombinant Human CLM-9/TREM4 Protein (His Tag)

Catalog Number:PKSH033298



**Note:** Centrifuge before opening to ensure complete recovery of vial contents.

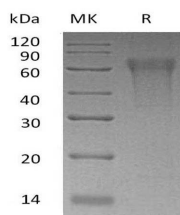
## Description

<b>Synonyms</b>	CMRF35-Like Molecule 9;CLM-9;CD300 Antigen-Like Family Member G;Triggering Receptor Expressed on Myeloid Cells 4;TREM-4;CD300g;CD300LG;CLM9;TREM4;NEPMUCIN
<b>Species</b>	Human
<b>Expression Host</b>	HEK293 Cells
<b>Sequence</b>	Leu19-Arg247
<b>Accession</b>	Q6UXG3
<b>Calculated Molecular Weight</b>	25.8 kDa
<b>Observed molecular weight</b>	70-95 kDa
<b>Tag</b>	C-His

## Properties

<b>Purity</b>	> 90 % as determined by reducing SDS-PAGE.
<b>Endotoxin</b>	< 1.0 EU per µg of the protein as determined by the LAL method.
<b>Storage</b>	Generally, lyophilized proteins are stable for up to 12 months when stored at -20 to -80°C. Reconstituted protein solution can be stored at 4-8°C for 2-7 days. Aliquots of reconstituted samples are stable at < -20°C for 3 months.
<b>Shipping</b>	This product is provided as lyophilized powder which is shipped with ice packs.
<b>Formulation</b>	Lyophilized from a 0.2 µm filtered solution of PBS, pH7.4. Normally 5 % - 8 % trehalose, mannitol and 0.01% Tween80 are added as protectants before lyophilization. Please refer to the specific buffer information in the printed manual.
<b>Reconstitution</b>	Please refer to the printed manual for detailed information.

## Data



> 90 % as determined by reducing SDS-PAGE.

## Background

CMRF35-Like Molecule 9 (CD300LG) is a single-pass type I membrane protein which belongs to the CD300 family. CD300LG has one Ig-like V-type domain which mediates binding to lymphocyte. CD300LG is highly expressed in heart, skeletal muscle and placenta. CD300LG acts as a receptor which may mediate L-selectin-dependent lymphocyte rollings. CD300LG also binds SELL in a calcium dependent manner and lymphocyte. CD300LG may play a important role in molecular traffic across the capillary endothelium.

## For Research Use Only

A Reliable Research Partner in Life Science and Medicine

Toll-free: 1-888-852-8623

Web: [www.elabscience.com](http://www.elabscience.com)

Tel: 1-832-243-6086

Email: [techsupport@elabscience.com](mailto:techsupport@elabscience.com)

Fax: 1-832-243-6017