

Recombinant Human CALCB Protein (Fc Tag)

Catalog Number:PKSH033301



Note: Centrifuge before opening to ensure complete recovery of vial contents.

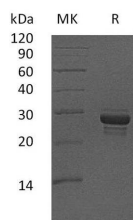
Description

Synonyms	Calcitonin gene-related peptide 2;CALC2;Beta-type CGRP;Calcitonin gene-related peptide II;CALCB
Species	Human
Expression Host	HEK293 Cells
Sequence	Ala26-Phe118
Accession	P10092
Calculated Molecular Weight	37 kDa
Observed molecular weight	38-42 kDa
Tag	C-Fc

Properties

Purity	> 90 % as determined by reducing SDS-PAGE.
Endotoxin	< 1.0 EU per µg of the protein as determined by the LAL method.
Storage	Generally, lyophilized proteins are stable for up to 12 months when stored at -20 to -80°C. Reconstituted protein solution can be stored at 4-8°C for 2-7 days. Aliquots of reconstituted samples are stable at < -20°C for 3 months.
Shipping	This product is provided as lyophilized powder which is shipped with ice packs.
Formulation	Lyophilized from a 0.2 µm filtered solution of PBS, pH 7.4. Normally 5 % - 8 % trehalose, mannitol and 0.01% Tween80 are added as protectants before lyophilization. Please refer to the specific buffer information in the printed manual.
Reconstitution	Please refer to the printed manual for detailed information.

Data



> 90 % as determined by reducing SDS-PAGE.

Background

CALCB is a member of the calcitonin family. CALCB is produced in both peripheral and central neurons. It is a potent peptide vasodilator and can function in the transmission of pain. In the spinal cord; the function and expression of CGRP may differ depending on the location of synthesis. CALCB is derived mainly from the cell bodies of motor neurons when synthesized in the ventral horn of the spinal cord and may contribute to the regeneration of nervous tissue after injury.

For Research Use Only

A Reliable Research Partner in Life Science and Medicine

Toll-free: 1-888-852-8623

Web: www.elabscience.com

Tel: 1-832-243-6086

Email: techsupport@elabscience.com

Fax: 1-832-243-6017