

Recombinant Human ERP27 Protein (His Tag)

Catalog Number:PKSH033303



Note: Centrifuge before opening to ensure complete recovery of vial contents.

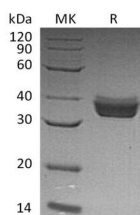
Description

Synonyms	Endoplasmic Reticulum Resident Protein 27;ER Protein 27;ERp27;ERP27;C12orf46
Species	Human
Expression Host	HEK293 Cells
Sequence	Glu26-Leu273
Accession	Q96DN0
Calculated Molecular Weight	28.8 kDa
Observed molecular weight	32-38 kDa
Tag	C-His

Properties

Purity	> 95 % as determined by reducing SDS-PAGE.
Endotoxin	< 1.0 EU per µg of the protein as determined by the LAL method.
Storage	Generally, lyophilized proteins are stable for up to 12 months when stored at -20 to -80°C. Reconstituted protein solution can be stored at 4-8°C for 2-7 days. Aliquots of reconstituted samples are stable at < -20°C for 3 months.
Shipping	This product is provided as lyophilized powder which is shipped with ice packs.
Formulation	Lyophilized from a 0.2 µm filtered solution of 20mM Tris-HCl, 150mM NaCl, pH 8.0. Normally 5 % - 8 % trehalose, mannitol and 0.01% Tween80 are added as protectants before lyophilization. Please refer to the specific buffer information in the print
Reconstitution	Please refer to the printed manual for detailed information.

Data



> 95 % as determined by reducing SDS-PAGE.

Background

Endoplasmic reticulum resident protein 27; also known as ER protein 27; C12orf46 and ERP27; is an endoplasmic reticulum luminal protein which is a member of the protein disulfide isomerase family. ERP27 contains one thioredoxin domain and does not contain a CXXC active site motif. ERP27 is widely expressed in many tissues; it has highest expression in pancreas; with lower levels in spleen; lung; kidney; thymus; and bone marrow. ERP27 interacts with PDIA3 and binds somatostatin-14 via hydrophobic interactions. ERP27 may act as a protease; protein disulfide isomerase; thiol-disulfide oxidase or phospholipase.

For Research Use Only

A Reliable Research Partner in Life Science and Medicine

Toll-free: 1-888-852-8623

Web: www.elabscience.com

Tel: 1-832-243-6086

Email: techsupport@elabscience.com

Fax: 1-832-243-6017