

Recombinant Human PPIase/PPIL1 Protein (His Tag)

Catalog No. PKSH033304

Note: Centrifuge before opening to ensure complete recovery of vial contents.

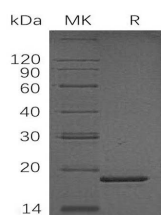
Description

Synonyms	Peptidyl-Prolyl Cis-Trans Isomerase-Like 1;PPIase;Rotamase PPIL1;PPIL1;CYPL1
Species	Human
Expression Host	E.coli
Sequence	Met 1-Gly166
Accession	Q9Y3C6
Calculated Molecular Weight	20.4 kDa
Observed molecular weight	19 kDa
Tag	N-His
Bioactivity	Not validated for activity

Properties

Purity	> 90 % as determined by reducing SDS-PAGE.
Endotoxin	< 1.0 EU per µg of the protein as determined by the LAL method.
Storage	Store at < -20°C, stable for 6 months. Please minimize freeze-thaw cycles.
Shipping	This product is provided as liquid. It is shipped at frozen temperature with blue ice/gel packs. Upon receipt, store it immediately at < -20°C.
Formulation	Supplied as a 0.2 µm filtered solution of 20mM Tris-HCl, pH 8.0.
Reconstitution	Not Applicable

Data



> 90 % as determined by reducing SDS-PAGE.

Background

Peptidyl-Prolyl Cis-Trans Isomerase-Like 1 (PPIase) belongs to the cyclophilin-type PPIase family. PPIases can accelerate the folding of proteins and catalyze the cis-trans isomerization of proline imidic peptide bonds in oligopeptides. PPIase is a ubiquitous protein and has highly expression in heart ;skeletal and muscle. PPIase contains a PPIase cyclophilin-type domain and four Cyclosporin A binding regions. PPIase might play an important role in proliferation of cancer cells through modulation of phosphorylation of stathmin. It is suggested that PPIase can act as as a novel molecular target for colon-cancer therapy.

For Research Use Only