

# Recombinant Human PPIase/PPIL1 Protein (His Tag)

Catalog Number:PKSH033304



**Note:** Centrifuge before opening to ensure complete recovery of vial contents.

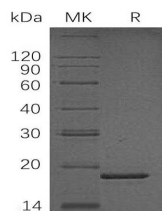
## Description

<b>Synonyms</b>	Peptidyl-Prolyl Cis-Trans Isomerase-Like 1;PPIase;Rotamase PPIL1;PPIL1;CYPL1
<b>Species</b>	Human
<b>Expression Host</b>	E.coli
<b>Sequence</b>	Met 1-Gly166
<b>Accession</b>	Q9Y3C6
<b>Calculated Molecular Weight</b>	20.4 kDa
<b>Observed molecular weight</b>	19 kDa
<b>Tag</b>	N-His

## Properties

<b>Purity</b>	> 90 % as determined by reducing SDS-PAGE.
<b>Endotoxin</b>	< 1.0 EU per µg of the protein as determined by the LAL method.
<b>Storage</b>	Store at < -20°C, stable for 6 months. Please minimize freeze-thaw cycles.
<b>Shipping</b>	This product is provided as liquid. It is shipped at frozen temperature with blue ice/gel packs. Upon receipt, store it immediately at < - 20°C.
<b>Formulation</b>	Supplied as a 0.2 µm filtered solution of 20mM Tris-HCl, pH 8.0.
<b>Reconstitution</b>	Not Applicable

## Data



> 90 % as determined by reducing SDS-PAGE.

## Background

Peptidyl-Prolyl Cis-Trans Isomerase-Like 1 (PPIase) belongs to the cyclophilin-type PPIase family. PPIases can accelerate the folding of proteins and catalyze the cis-trans isomerization of proline imidic peptide bonds in oligopeptides. PPIase is a ubiquitous protein and has highly expression in heart ;skeletal and muscle. PPIase contains a PPIase cyclophilin-type domain and four Cyclosporin A binding regions. PPIase might play an important role in proliferation of cancer cells through modulation of phosphorylation of stathmin. It is suggested that PPIase can act as a novel molecular target for colon-cancer therapy.

## For Research Use Only

A Reliable Research Partner in Life Science and Medicine

Toll-free: 1-888-852-8623

Web: [www.elabscience.com](http://www.elabscience.com)

Tel: 1-832-243-6086

Email: [techsupport@elabscience.com](mailto:techsupport@elabscience.com)

Fax: 1-832-243-6017