

## Recombinant Human IL1RL1/ST2 Protein (His Tag)

Catalog No. PKSH033314

**Note:** Centrifuge before opening to ensure complete recovery of vial contents.

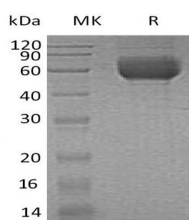
### Description

<b>Synonyms</b>	DER4;FIT-1;IL1RL1;IL33R;IL-1 R4;ST2;ST2L;ST2V;T1
<b>Species</b>	Human
<b>Expression Host</b>	HEK293 Cells
<b>Sequence</b>	Lys19-Phe328
<b>Accession</b>	Q01638-2
<b>Calculated Molecular Weight</b>	36.0 kDa
<b>Observed molecular weight</b>	50-85 kDa
<b>Tag</b>	C-His
<b>Bioactivity</b>	Not validated for activity

### Properties

<b>Purity</b>	> 95 % as determined by reducing SDS-PAGE.
<b>Endotoxin</b>	< 1.0 EU per µg of the protein as determined by the LAL method.
<b>Storage</b>	Generally, lyophilized proteins are stable for up to 12 months when stored at -20 to -80°C. Reconstituted protein solution can be stored at 4-8°C for 2-7 days. Aliquots of reconstituted samples are stable at < -20°C for 3 months.
<b>Shipping</b>	This product is provided as lyophilized powder which is shipped with ice packs.
<b>Formulation</b>	Lyophilized from a 0.2 µm filtered solution of 20mM PB,150mM NaCl,pH7.4. Normally 5% - 8% trehalose, mannitol and 0.01% Tween 80 are added as protectants before lyophilization. Please refer to the specific buffer information in the printed manual.
<b>Reconstitution</b>	Please refer to the printed manual for detailed information.

### Data



> 95 % as determined by reducing SDS-PAGE.

### Background

Interleukin 1 receptor-like 1(IL1RL1) is a member of the interleukin-1 receptor family, Contains 3 Ig-like C2-type domains and 1 TIR domain. It is highly expressed in kidney, lung, placenta, stomach, skeletal muscle, colon and small

### For Research Use Only

intestine. IL1RL1 is a receptor for interleukin-33, its stimulation recruits MYD88, IRAK1, IRAK4, and TRAF6, followed by phosphorylation of MAPK3/ERK1 and/or MAPK1/ERK2, MAPK14, and MAPK8. IL1RL1 may possibly be involved in helper T-cell function. Soluble IL1RL1 also acts as a negative regulator of Th2 cytokine production, it directly implicated in the progression of cardiac disease.