

Recombinant Human IL1RL1/ST2 Protein (His Tag)

Catalog Number:PKSH033314



Note: Centrifuge before opening to ensure complete recovery of vial contents.

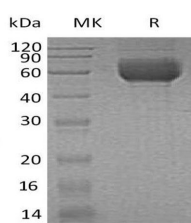
Description

Synonyms	DER4;FIT-1;IL1RL1;IL33R;IL-1 R4;ST2;ST2L;ST2V;T1
Species	Human
Expression Host	HEK293 Cells
Sequence	Lys19-Phe328
Accession	Q01638-2
Calculated Molecular Weight	36.0 kDa
Observed molecular weight	50-85 kDa
Tag	C-His

Properties

Purity	> 95 % as determined by reducing SDS-PAGE.
Endotoxin	< 1.0 EU per µg of the protein as determined by the LAL method.
Storage	Generally, lyophilized proteins are stable for up to 12 months when stored at -20 to -80°C. Reconstituted protein solution can be stored at 4-8°C for 2-7 days. Aliquots of reconstituted samples are stable at < -20°C for 3 months.
Shipping	This product is provided as lyophilized powder which is shipped with ice packs.
Formulation	Lyophilized from a 0.2 µm filtered solution of 20mM PB,150mM NaCl,pH7.4. Normally 5 % - 8 % trehalose, mannitol and 0.01% Tween80 are added as protectants before lyophilization. Please refer to the specific buffer information in the printed manual
Reconstitution	Please refer to the printed manual for detailed information.

Data



> 95 % as determined by reducing SDS-PAGE.

Background

Interleukin 1 receptor-like 1(IL1RL1) is a member of the interleukin-1 receptor family, Contains 3 Ig-like C2-type domains and 1 TIR domain. It is highly expressed in kidney, lung, placenta, stomach, skeletal muscle, colon and small intestine. IL1RL1 is a receptor for interleukin-33, its stimulation recruits MYD88, IRAK1, IRAK4, and TRAF6, followed by phosphorylation of MAPK3/ERK1 and/or MAPK1/ERK2, MAPK14, and MAPK8. IL1RL1 may possibly be involved in helper T-cell function. Soluble IL1RL1 also acts as a negative regulator of Th2 cytokine production, it directly implicated in the progression of cardiac disease.

For Research Use Only

A Reliable Research Partner in Life Science and Medicine

Toll-free: 1-888-852-8623

Web: www.elabscience.com

Tel: 1-832-243-6086

Email: techsupport@elabscience.com

Fax: 1-832-243-6017