

Recombinant Human KIR2DL3 Protein (His Tag)

Catalog Number:PKSH033319



Note: Centrifuge before opening to ensure complete recovery of vial contents.

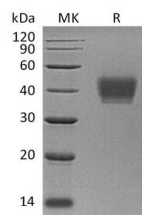
Description

Synonyms	Killer Cell Immunoglobulin-Like Receptor 2DL3;CD158 Antigen-Like Family Member B2;KIR-023GB;Killer Inhibitory Receptor cl 2-3;MHC Class I NK Cell Receptor;NKAT2a;NKAT2b;Natural Killer-Associated Transcript 2;NKAT-2;p58 Natural Killer Cell Receptor Clone CL-6;p58 NK Receptor CL-6;p58.2 MHC Class-I-Specific NK Receptor;CD158b2;KIR2DL3;CD158B2;KIRCL23;NKAT2;KIR-K7 b;KIR-K7c;KIR2DS5;KIRCL23;MGC129943;NKAT;NKAT2;NKAT2A;NKAT2B
Species	Human
Expression Host	HEK293 Cells
Sequence	His22-His245
Accession	P43628
Calculated Molecular Weight	25.4 kDa
Observed molecular weight	35-50 kDa
Tag	C-His

Properties

Purity	> 95 % as determined by reducing SDS-PAGE.
Endotoxin	< 1.0 EU per µg of the protein as determined by the LAL method.
Storage	Generally, lyophilized proteins are stable for up to 12 months when stored at -20 to -80°C. Reconstituted protein solution can be stored at 4-8°C for 2-7 days. Aliquots of reconstituted samples are stable at < -20°C for 3 months.
Shipping	This product is provided as lyophilized powder which is shipped with ice packs.
Formulation	Lyophilized from a 0.2 µm filtered solution of PBS, pH 7.4. Normally 5 % - 8 % trehalose, mannitol and 0.01% Tween80 are added as protectants before lyophilization. Please refer to the specific buffer information in the printed manual.
Reconstitution	Please refer to the printed manual for detailed information.

Data



> 95 % as determined by reducing SDS-PAGE.

Background

Killer-Cell Immunoglobulin-Like Receptors (KIRs) are important cells of the immune system. KIRs are a family of Natural Killer (NK) Cells surface glycoproteins. KIRs control the killing function of these cells by interacting with MHC class I molecules. This interaction allows KIRs to identify virally infected cells or tumor cells by the distinctive low level

For Research Use Only

A Reliable Research Partner in Life Science and Medicine

Toll-free: 1-888-852-8623

Web: www.elabscience.com

Tel: 1-832-243-6086

Email: techsupport@elabscience.com

Fax: 1-832-243-6017

Recombinant Human KIR2DL3 Protein (His Tag)

Catalog Number:PKSH033319



of Class I MHC on their surface. The majority of KIRs are inhibitory, their recognition of MHC suppresses the cytotoxic activity of their NK cell. Only a limited number of KIRs have the capacity to activate cells. KIR2DL3 is an inhibitory Killer Cell Ig-like Receptor. KIR2DL3 recognizes class I MHC molecules (HLA-Cw1, -Cw3, -Cw7, and Cw8). KIR2DL3 inhibits the activity of NK cells thus preventing cell lysis.

For Research Use Only

A Reliable Research Partner in Life Science and Medicine

Toll-free: 1-888-852-8623

Tel: 1-832-243-6086

Fax: 1-832-243-6017

Web: www.elabscience.com

Email: techsupport@elabscience.com