

Recombinant Human CFHR1 Protein (His Tag)

Catalog Number:PKSH033320



Note: Centrifuge before opening to ensure complete recovery of vial contents.

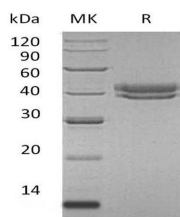
Description

Synonyms	Complement Factor H-Related Protein 1;FHR-1;H Factor-Like Protein 1;H-Factor-Like 1;H36;CFHR1;CFHL;CFHL1;CFHL1P;CFHR1P;FHR1;HFL1;HFL2
Species	Human
Expression Host	HEK293 Cells
Sequence	Glu19-Arg330
Accession	Q03591
Calculated Molecular Weight	36.8 kDa
Observed molecular weight	37-52 kDa
Tag	C-His

Properties

Purity	> 95 % as determined by reducing SDS-PAGE.
Endotoxin	< 1.0 EU per µg of the protein as determined by the LAL method.
Storage	Generally, lyophilized proteins are stable for up to 12 months when stored at -20 to -80°C. Reconstituted protein solution can be stored at 4-8°C for 2-7 days. Aliquots of reconstituted samples are stable at < -20°C for 3 months.
Shipping	This product is provided as lyophilized powder which is shipped with ice packs.
Formulation	Lyophilized from a 0.2 µm filtered solution of 20mM PB, 8% Trehalose, 4% Mannitol, 50mM NaCl, 0.05% Tween 80, pH7.5. Normally 5 % - 8 % trehalose, mannitol and 0.01 % Tween80 are added as protectants before lyophilization. Please refer to the speci
Reconstitution	Please refer to the printed manual for detailed information.

Data



> 95 % as determined by reducing SDS-PAGE.

Background

Complement Factor H-Related 1 (CFHR1) is a 43 kDa secreted member of the factor H family of glycoproteins. The human Complement Factor H protein family consists of the complement and immune regulators factor H; the factor H-like protein 1 (FHL-1) and five factor H-related proteins (CFHR-1 to -5). Members of the H-related protein family are exclusively composed of individually folded protein domains; termed short consensus repeats (SCRs) or complement control modules. FHR1 is produced by hepatocytes and circulates as two differentially glycosylated isoforms (37 kDa and 43 kDa). Mature human FHR1 is 312 amino acids in length. It contains five; approximately 60 aa SCRs that basically

For Research Use Only

A Reliable Research Partner in Life Science and Medicine

Toll-free: 1-888-852-8623

Web: www.elabscience.com

Tel: 1-832-243-6086

Email: techsupport@elabscience.com

Fax: 1-832-243-6017

Recombinant Human CFHR1 Protein (His Tag)

Catalog Number:PKSH033320



constitute the entire molecule. FHR1 may play a role in complement regulation; lipid metabolism and lipoprotein complexes that bind PMNs to LPS.

For Research Use Only

A Reliable Research Partner in Life Science and Medicine

Toll-free: 1-888-852-8623

Tel: 1-832-243-6086

Fax: 1-832-243-6017

Web: www.elabscience.com

Email: techsupport@elabscience.com