

Recombinant Human UBE2A Protein (GST & His Tag)

Catalog No. PKSH033322

Note: Centrifuge before opening to ensure complete recovery of vial contents.

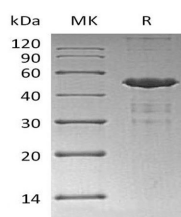
Description

| | |
|------------------------------------|--------------------------------------------------------------------------------------------------------------------------------|
| Synonyms | Ubiquitin-Conjugating Enzyme E2 A;RAD6 Homolog A;HR6A;hHR6A;Ubiquitin Carrier Protein A;Ubiquitin-Protein Ligase A;UBE2A;RAD6A |
| Species | Human |
| Expression Host | E.coli |
| Sequence | Met 1-Cys152 |
| Accession | P49459 |
| Calculated Molecular Weight | 49.0 kDa |
| Observed molecular weight | 45 kDa |
| Tag | N-GST-His |
| Bioactivity | Not validated for activity |

Properties

| | |
|-----------------------|-------------------------------------------------------------------------------------------------------------------------------------------------|
| Purity | > 80 % as determined by reducing SDS-PAGE. |
| Endotoxin | < 1.0 EU per µg of the protein as determined by the LAL method. |
| Storage | Store at < -20°C, stable for 6 months. Please minimize freeze-thaw cycles. |
| Shipping | This product is provided as liquid. It is shipped at frozen temperature with blue ice/gel packs. Upon receipt, store it immediately at < -20°C. |
| Formulation | Supplied as a 0.2 µm filtered solution of 50mM HEPES, 150mM NaCl, 2mM DTT, 10% Glycerol, pH 7.5. |
| Reconstitution | Not Applicable |

Data



> 80 % as determined by reducing SDS-PAGE.

Background

Ubiquitin-Conjugating Enzyme E2 (UBE2A) is a member of the E2 Ubiquitin-Conjugating Enzyme family. The modification of proteins with ubiquitin is an important cellular mechanism for targeting abnormal or short-lived proteins for degradation. Ubiquitination involves at least three classes of enzymes: ubiquitin-activating enzymes; or E1s; ubiquitin-conjugating enzymes; or E2s; and ubiquitin-protein ligases; or E3s. UBE2A catalyzes the covalent attachment of ubiquitin

For Research Use Only

to other proteins. UBE2A is required for postreplication repair of UV-damaged DNA. UBE2A Interacts with RAD18 and WAC.