

Recombinant Human UBE2A Protein (GST & His Tag)

Catalog Number:PKSH033322



Note: Centrifuge before opening to ensure complete recovery of vial contents.

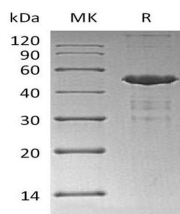
Description

Synonyms	Ubiquitin-Conjugating Enzyme E2 A;RAD6 Homolog A;HR6A;hHR6A;Ubiquitin Carrier Protein A;Ubiquitin-Protein Ligase A;UBE2A;RAD6A
Species	Human
Expression Host	E.coli
Sequence	Met 1-Cys152
Accession	P49459
Calculated Molecular Weight	49.0 kDa
Observed molecular weight	45 kDa
Tag	N-GST-His

Properties

Purity	> 80 % as determined by reducing SDS-PAGE.
Endotoxin	< 1.0 EU per µg of the protein as determined by the LAL method.
Storage	Store at < -20°C, stable for 6 months. Please minimize freeze-thaw cycles.
Shipping	This product is provided as liquid. It is shipped at frozen temperature with blue ice/gel packs. Upon receipt, store it immediately at < - 20°C.
Formulation	Supplied as a 0.2 µm filtered solution of 50mM HEPES, 150mM NaCl, 2mM DTT, 10% Glycerol, pH 7.5.
Reconstitution	Not Applicable

Data



> 80 % as determined by reducing SDS-PAGE.

Background

Ubiquitin-Conjugating Enzyme E2 (UBE2A) is a member of the E2 Ubiquitin-Conjugating Enzyme family. The modification of proteins with ubiquitin is an important cellular mechanism for targeting abnormal or short-lived proteins for degradation. Ubiquitination involves at least three classes of enzymes: ubiquitin-activating enzymes; or E1s; ubiquitin-conjugating enzymes; or E2s; and ubiquitin-protein ligases; or E3s. UBE2A catalyzes the covalent attachment of ubiquitin to other proteins. UBE2A is required for postreplication repair of UV-damaged DNA. UBE2A Interacts with RAD18 and WAC.

For Research Use Only

A Reliable Research Partner in Life Science and Medicine

Toll-free: 1-888-852-8623

Web: www.elabscience.com

Tel: 1-832-243-6086

Email: techsupport@elabscience.com

Fax: 1-832-243-6017