

Recombinant Human Ube2L6 Protein (His Tag)

Catalog Number:PKSH033324



Note: Centrifuge before opening to ensure complete recovery of vial contents.

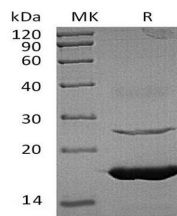
Description

Synonyms	Ubiquitin/ISG15-Conjugating Enzyme E2 L6;Retinoic Acid-Induced Gene B Protein;RIG-B;UbcH8;Ubiquitin Carrier Protein L6;Ubiquitin-Protein Ligase L6;UBE2L6;UBCH8
Species	Human
Expression Host	E.coli
Sequence	Met 1-Ser153
Accession	O14933
Calculated Molecular Weight	18.8 kDa
Observed molecular weight	17 kDa
Tag	C-His

Properties

Purity	> 95 % as determined by reducing SDS-PAGE.
Endotoxin	< 1.0 EU per µg of the protein as determined by the LAL method.
Storage	Store at < -20°C, stable for 6 months. Please minimize freeze-thaw cycles.
Shipping	This product is provided as liquid. It is shipped at frozen temperature with blue ice/gel packs. Upon receipt, store it immediately at < - 20°C.
Formulation	Supplied as a 0.2 µm filtered solution of 50mM HEPES, 100mM NaCl, pH 8.0.
Reconstitution	Not Applicable

Data



> 95 % as determined by reducing SDS-PAGE.

Background

Ubiquitin/ISG15-Conjugating Enzyme E2 L6 (UBE2L6) is an enzyme member of the E2 ubiquitin-conjugating enzyme family. UBE2L6 plays a same function as UBE2D; it catalyzes the covalent attachment of ubiquitin or ISG15 to other proteins. UBE2L6 promotes ubiquitination and subsequent proteasomal degradation of FLT3. It has functions in the E6/E6-AP-induced ubiquitination of p53/TP53.

For Research Use Only

A Reliable Research Partner in Life Science and Medicine

Toll-free: 1-888-852-8623

Web: www.elabscience.com

Tel: 1-832-243-6086

Email: techsupport@elabscience.com

Fax: 1-832-243-6017