

## Recombinant Human ACYP1 Protein (His Tag)

**Catalog No.** PKSH033326

**Note:** Centrifuge before opening to ensure complete recovery of vial contents.

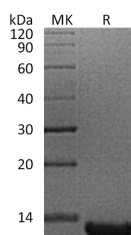
### Description

<b>Synonyms</b>	Acylphosphatase-1;ACYP1;Acylphosphatase;erythrocyte isozyme;Acylphosphatase;organ-common type isozyme;Acylphosphate phosphohydrolase 1;ACYPE
<b>Species</b>	Human
<b>Expression Host</b>	E.coli
<b>Sequence</b>	Met 1-Lys99
<b>Accession</b>	P07311
<b>Calculated Molecular Weight</b>	13.4 kDa
<b>Observed molecular weight</b>	14 kDa
<b>Tag</b>	N-His
<b>Bioactivity</b>	Not validated for activity

### Properties

<b>Purity</b>	> 95 % as determined by reducing SDS-PAGE.
<b>Endotoxin</b>	< 1.0 EU per µg of the protein as determined by the LAL method.
<b>Storage</b>	Store at < -20°C, stable for 6 months. Please minimize freeze-thaw cycles.
<b>Shipping</b>	This product is provided as liquid. It is shipped at frozen temperature with blue ice/gel packs. Upon receipt, store it immediately at < -20°C.
<b>Formulation</b>	Supplied as a 0.2 µm filtered solution of 20mM Tris-HCl, 100mM NaCl, 20% Glycerol, 1mM DTT, pH 8.0.
<b>Reconstitution</b>	Not Applicable

### Data



> 95 % as determined by reducing SDS-PAGE.

### Background

ACYP1; also known as Acylphosphatase-1; Acylphosphatase; erythrocyte isozyme; Acylphosphatase; organ-common type isozyme; Acylphosphate phosphohydrolase 1 and ACYPE; is a small cytosolic enzyme which catalyzes the hydrolysis of the carboxyl-phosphate bond of acylphosphates. ACYP1 is a protein which belongs to the acylphosphatase family and

### For Research Use Only

contains 1 fibrinogen C-terminal domain. Two isoenzymes have been isolated; called muscle acylphosphatase and erythrocyte acylphosphatase; on the basis of their tissue localization. This gene encodes the erythrocyte acylphosphatase isoenzyme. Alternatively spliced transcript variants that encode different proteins were identified through data analysis. Recombinant human ACYP1 protein was expressed in E. coli fused with HIS-tag at N-terminus.