

Recombinant Human FTL Protein (His Tag)

Catalog Number:PKSH033328



Note: Centrifuge before opening to ensure complete recovery of vial contents.

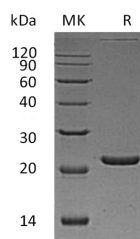
Description

Synonyms	Ferritin L subunit;Ferritin light chain;FTL
Species	Human
Expression Host	E.coli
Sequence	Met 1-Asp175
Accession	P02792
Calculated Molecular Weight	21.5 kDa
Observed molecular weight	20-25 kDa
Tag	N-His

Properties

Purity	> 95 % as determined by reducing SDS-PAGE.
Endotoxin	< 1.0 EU per µg of the protein as determined by the LAL method.
Storage	Generally, lyophilized proteins are stable for up to 12 months when stored at -20 to -80°C. Reconstituted protein solution can be stored at 4-8°C for 2-7 days. Aliquots of reconstituted samples are stable at < -20°C for 3 months.
Shipping	This product is provided as lyophilized powder which is shipped with ice packs.
Formulation	Lyophilized from a 0.2 µm filtered solution of 20mM Tris-HCl, 250mM NaCl, 1mM EDTA, pH 9.5. Normally 5 % - 8 % trehalose, mannitol and 0.01 % Tween80 are added as protectants before lyophilization. Please refer to the specific buffer information in
Reconstitution	Please refer to the printed manual for detailed information.

Data



> 95 % as determined by reducing SDS-PAGE.

Background

Ferritin is a large; iron-storage heteropolymeric protein;which is expressed in most kinds of cells and co-assemble in different proportion in a tissue-specific manner. Ferritin has oligomer of 24 subunits and two types of subunits including light chain(FTL) and heavy chain. Ferritin can remove Fe (II) from solution in the presence of oxygen and is very important for iron homeostasis. Iron is absorbed in the ferrous form and deposited as ferric hydroxides after oxidation. Iron is first oxidized to the ferric state for storage as ferric oxyhydroxide whithin the protein shell of ferritin. Thus; ferritin removes excess iron from the cell sap where it could otherwise participate in peroxidation mechanisms. Ferritin also plays a role in delivery of iron to cells and mediates iron uptake in capsule cells of the developing kidney.

For Research Use Only

A Reliable Research Partner in Life Science and Medicine

Toll-free: 1-888-852-8623

Web: www.elabscience.com

Tel: 1-832-243-6086

Email: techsupport@elabscience.com

Fax: 1-832-243-6017