

Recombinant Human LMAN2/VIP36 Protein (Human Cells, His Tag)



Catalog Number:PKSH033330

Note: Centrifuge before opening to ensure complete recovery of vial contents.

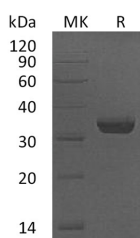
Description

Synonyms	Vesicular Integral-Membrane Protein VIP36;Glycoprotein GP36b;Lectin Mannose-Binding 2;Vesicular Integral-Membrane Protein 36;VIP36;LMAN2;C5orf8
Species	Human
Expression Host	HEK293 Cells
Sequence	Asp45-Arg322
Accession	Q12907
Calculated Molecular Weight	32.7 kDa
Observed molecular weight	33 kDa
Tag	C-His

Properties

Purity	> 95 % as determined by reducing SDS-PAGE.
Endotoxin	< 1.0 EU per µg of the protein as determined by the LAL method.
Storage	Generally, lyophilized proteins are stable for up to 12 months when stored at -20 to -80°C. Reconstituted protein solution can be stored at 4-8°C for 2-7 days. Aliquots of reconstituted samples are stable at < -20°C for 3 months.
Shipping	This product is provided as lyophilized powder which is shipped with ice packs.
Formulation	Lyophilized from a 0.2 µm filtered solution of 50mM Tris-HCl, 10mM GSH, pH 8.0. Normally 5 % - 8 % trehalose, mannitol and 0.01% Tween80 are added as protectants before lyophilization. Please refer to the specific buffer information in the printed
Reconstitution	Please refer to the printed manual for detailed information.

Data



> 95 % as determined by reducing SDS-PAGE.

Background

Vesicular integral-membrane protein VIP36 is also known as Glycoprotein GP36b; Lectin mannose-binding 2; Vesicular integral-membrane protein 36; LMAN2 and C5orf8. LMAN2 is widely expressed and contains one L-type lectin-like domain. LMAN2 binds high mannose type glycoproteins and may facilitate their sorting; trafficking and quality control. LMAN2 plays a role as an intracellular lectin in the early secretory pathway. LMAN2 interacts with N-acetyl-D-galactosamine and high-mannose type glycans and may also bind to O-linked glycans. LMAN2 is also involved in the transport and sorting of glycoproteins carrying high mannose-type glycans.

For Research Use Only

A Reliable Research Partner in Life Science and Medicine

Toll-free: 1-888-852-8623

Web: www.elabscience.com

Tel: 1-832-243-6086

Email: techsupport@elabscience.com

Fax: 1-832-243-6017