

Recombinant Human UBE2T Protein (His Tag)

Catalog Number:PKSH033331



Note: Centrifuge before opening to ensure complete recovery of vial contents.

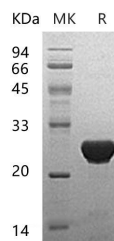
Description

Synonyms	Ubiquitin-Conjugating Enzyme E2 T;Cell Proliferation-Inducing Gene 50 Protein;Ubiquitin Carrier Protein T;Ubiquitin-Protein Ligase T;UBE2T
Species	Human
Expression Host	E.coli
Sequence	Met 1-Val197
Accession	Q9NPD8
Calculated Molecular Weight	24.7 kDa
Observed molecular weight	25-30 kDa
Tag	N-His

Properties

Purity	> 95 % as determined by reducing SDS-PAGE.
Endotoxin	< 1.0 EU per µg of the protein as determined by the LAL method.
Storage	Store at < -20°C, stable for 6 months. Please minimize freeze-thaw cycles.
Shipping	This product is provided as liquid. It is shipped at frozen temperature with blue ice/gel packs. Upon receipt, store it immediately at < - 20°C.
Formulation	Supplied as a 0.2 µm filtered solution of 50mM HEPES, 150mM NaCl, 2mM DTT, 10% Glycerol, pH 7.5.
Reconstitution	Not Applicable

Data



> 95 % as determined by reducing SDS-PAGE.

Background

Ubiquitin-Conjugating Enzyme E2 T (UBE2T) is a ligase that belongs to the Ubiquitin-Conjugating Enzyme family. UBE2T accepts the ATP-dependent ubiquitin from the E1 complex and catalyzes its covalent attachment to other proteins. In vitro; UBE2T is able to catalyze polyubiquitination using all 7 ubiquitin Lys residues; but may prefer 'Lys-11'-; 'Lys-27'-; 'Lys-48'- and 'Lys-63'-linked polyubiquitination. UBE2T is an important factor of the Faconi anemia pathway of DNA damage repair and; upon self-inactivation; may negatively regulate the Faconi pathway.

For Research Use Only

A Reliable Research Partner in Life Science and Medicine

Toll-free: 1-888-852-8623

Web: www.elabscience.com

Tel: 1-832-243-6086

Email: techsupport@elabscience.com

Fax: 1-832-243-6017