

Recombinant Human LYPLA2 Protein (His Tag)

Catalog Number:PKSH033332



Note: Centrifuge before opening to ensure complete recovery of vial contents.

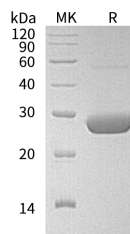
Description

Synonyms	Acyl-Protein Thioesterase 2;APT-2;Lysophospholipase II;LPL-II;LysoPLA II;LYPLA2;APT2
Species	Human
Expression Host	E.coli
Sequence	Met 1-Val231
Accession	O95372
Calculated Molecular Weight	25.8 kDa
Observed molecular weight	28 kDa
Tag	C-His

Properties

Purity	> 95 % as determined by reducing SDS-PAGE.
Endotoxin	< 1.0 EU per µg of the protein as determined by the LAL method.
Storage	Store at < -20°C, stable for 6 months. Please minimize freeze-thaw cycles.
Shipping	This product is provided as liquid. It is shipped at frozen temperature with blue ice/gel packs. Upon receipt, store it immediately at < - 20°C.
Formulation	Supplied as a 0.2 µm filtered solution of 20mM Tris-HCl, 1mM DTT, 100mM NaCl, pH 8.0.
Reconstitution	Not Applicable

Data



> 95 % as determined by reducing SDS-PAGE.

Background

Acyl-Protein Thioesterase 2 is a cytoplasmic protein that belongs to the AB Hydrolase 2 family. LYPLA2 is a lysophospholipase and hydrolyzes fatty acids from S-acylated cysteine residues in proteins such as trimeric G alpha proteins or HRAS. LYPLA2 has hydrolase activity that converts Palmitoyl-protein to palmitate and protein. LYPLA2 regulates the multifunctional lysophospholipids by acting on biological membranes. LYPLA2 participates in Glycerophospholipid metabolism pathway; fatty acid metabolic process and lipid metabolic process.

For Research Use Only

A Reliable Research Partner in Life Science and Medicine

Toll-free: 1-888-852-8623

Web: www.elabscience.com

Tel: 1-832-243-6086

Email: techsupport@elabscience.com

Fax: 1-832-243-6017