

Recombinant Human SECTM1 Protein (His Tag)

Catalog Number:PKSH033335



Note: Centrifuge before opening to ensure complete recovery of vial contents.

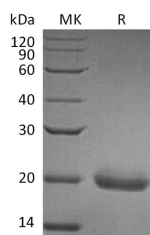
Description

Synonyms	Secreted and Transmembrane Protein 1;Protein K-12;SECTM1;K12
Species	Human
Expression Host	HEK293 Cells
Sequence	Gln29-Gly145
Accession	Q8WVN6
Calculated Molecular Weight	13.8 kDa
Observed molecular weight	18-22 kDa
Tag	C-His

Properties

Purity	> 95 % as determined by reducing SDS-PAGE.
Endotoxin	< 1.0 EU per µg of the protein as determined by the LAL method.
Storage	Generally, lyophilized proteins are stable for up to 12 months when stored at -20 to -80°C. Reconstituted protein solution can be stored at 4-8°C for 2-7 days. Aliquots of reconstituted samples are stable at < -20°C for 3 months.
Shipping	This product is provided as lyophilized powder which is shipped with ice packs.
Formulation	Lyophilized from a 0.2 µm filtered solution of 20mM PB, 150mM NaCl, pH 7.4. Normally 5 % - 8 % trehalose, mannitol and 0.01% Tween80 are added as protectants before lyophilization. Please refer to the specific buffer information in the printed man
Reconstitution	Please refer to the printed manual for detailed information.

Data



> 95 % as determined by reducing SDS-PAGE.

Background

Secreted and Transmembrane Protein 1 (SECTM1) is a transmembrane and secreted protein that belongs to the SECTM family. SECTM1 is expressed in a perinuclear Golgi-like pattern. It is detected at the highest levels in peripheral blood leukocytes and breast cancer cell lines. SECTM1 is considered to participate in thymocyte signaling and the hematopoietic/immune system processes. It is reported that SECTM1 is a broadly expressed; IFN-γ-inducible molecule; which functions as a potent costimulatory ligand for T cell activation and is synergistic with anti-CD28.

For Research Use Only

A Reliable Research Partner in Life Science and Medicine

Toll-free: 1-888-852-8623

Web: www.elabscience.com

Tel: 1-832-243-6086

Email: techsupport@elabscience.com

Fax: 1-832-243-6017