

# Recombinant Human PTH1R Protein (His Tag)

Catalog Number:PKSH033336



**Note:** Centrifuge before opening to ensure complete recovery of vial contents.

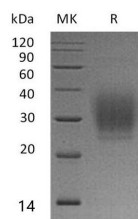
## Description

<b>Synonyms</b>	Parathyroid hormone/parathyroid hormone-related peptide receptor;PTH/PTHrP type I receptor;PTH/PTHr receptor;Parathyroid hormone 1 receptor;PTH1 receptor;PTH1R
<b>Species</b>	Human
<b>Expression Host</b>	HEK293 Cells
<b>Sequence</b>	Tyr23-Met 189
<b>Accession</b>	Q03431
<b>Calculated Molecular Weight</b>	20.3 kDa
<b>Observed molecular weight</b>	25-35 kDa
<b>Tag</b>	C-His

## Properties

<b>Purity</b>	> 95 % as determined by reducing SDS-PAGE.
<b>Endotoxin</b>	< 1.0 EU per µg of the protein as determined by the LAL method.
<b>Storage</b>	Generally, lyophilized proteins are stable for up to 12 months when stored at -20 to -80°C. Reconstituted protein solution can be stored at 4-8°C for 2-7 days. Aliquots of reconstituted samples are stable at < -20°C for 3 months.
<b>Shipping</b>	This product is provided as lyophilized powder which is shipped with ice packs.
<b>Formulation</b>	Lyophilized from a 0.2 µm filtered solution of PBS, pH 7.4. Normally 5 % - 8 % trehalose, mannitol and 0.01% Tween80 are added as protectants before lyophilization. Please refer to the specific buffer information in the printed manual.
<b>Reconstitution</b>	Please refer to the printed manual for detailed information.

## Data



> 95 % as determined by reducing SDS-PAGE.

## Background

Parathyroid hormone/parathyroid hormone-related peptide receptor also known as parathyroid hormone 1 receptor (PTH1R) is a protein that in humans is encoded by the PTH1R gene; Belongs to the G-protein coupled receptor 2 family.PTH1R functions as a receptor for parathyroid hormone (PTH) and for parathyroid hormone-related protein (PTHrP); also called parathyroid hormone-like hormone (PTH LH).

## For Research Use Only

A Reliable Research Partner in Life Science and Medicine

Toll-free: 1-888-852-8623

Web: [www.elabscience.com](http://www.elabscience.com)

Tel: 1-832-243-6086

Email: [techsupport@elabscience.com](mailto:techsupport@elabscience.com)

Fax: 1-832-243-6017