

# Recombinant Human RGMA Protein (E.coli, His Tag)

Catalog Number:PKSH033343



**Note:** Centrifuge before opening to ensure complete recovery of vial contents.

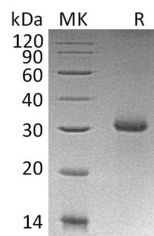
## Description

<b>Synonyms</b>	Repulsive guidance molecule A;RGM domain family member A;RGM
<b>Species</b>	Human
<b>Expression Host</b>	E.coli
<b>Sequence</b>	Pro169-Gly422
<b>Accession</b>	AAI51133.1
<b>Calculated Molecular Weight</b>	29.8 kDa
<b>Observed molecular weight</b>	30 kDa
<b>Tag</b>	N-His

## Properties

<b>Purity</b>	> 95 % as determined by reducing SDS-PAGE.
<b>Endotoxin</b>	< 1.0 EU per µg of the protein as determined by the LAL method.
<b>Storage</b>	Store at < -20°C, stable for 6 months. Please minimize freeze-thaw cycles.
<b>Shipping</b>	This product is provided as liquid. It is shipped at frozen temperature with blue ice/gel packs. Upon receipt, store it immediately at < - 20°C.
<b>Formulation</b>	Supplied as a 0.2 µm filtered solution of 20mM PB, 10% Trehalose, 50% Glycerol, 1mM DTT, 0.05% Tween80, pH 7.8.
<b>Reconstitution</b>	Not Applicable

## Data



> 95 % as determined by reducing SDS-PAGE.

## Background

Repulsive guidance molecule A (RGMA) is a cell membrane protein and belongs to the repulsive guidance molecule (RGM) family. It interacts with NEO1; BMP2 and BMP4. RGMA is a glycosylphosphatidylinositol-anchored glycoprotein that functions as an axon guidance protein in the developing and adult central nervous system. It helps guide Retinal Ganglion Cell (RGC) axons to the tectum in the midbrain. RGMA has been implicated to play an important role in the developing brain and in the scar tissue that forms after a brain injury. This protein may also function as a tumor suppressor in some cancers.

## For Research Use Only

A Reliable Research Partner in Life Science and Medicine

Toll-free: 1-888-852-8623

Web: [www.elabscience.com](http://www.elabscience.com)

Tel: 1-832-243-6086

Email: [techsupport@elabscience.com](mailto:techsupport@elabscience.com)

Fax: 1-832-243-6017