

# Recombinant Human IDH1 Protein (Human Cells, His Tag)



Catalog Number:PKSH033345

**Note:** Centrifuge before opening to ensure complete recovery of vial contents.

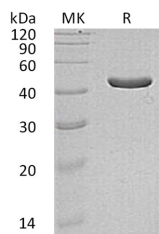
## Description

<b>Synonyms</b>	Isocitrate Dehydrogenase [NADP] Cytoplasmic;IDH;Cytosolic NADP-Isocitrate Dehydrogenase;IDP;NADP(+)-Specific ICDH;Oxalosuccinate Decarboxylase;IDH1;PICD
<b>Species</b>	Human
<b>Expression Host</b>	HEK293 Cells
<b>Sequence</b>	Met 1-Leu414
<b>Accession</b>	O75874
<b>Calculated Molecular Weight</b>	47.7 kDa
<b>Observed molecular weight</b>	45 kDa
<b>Tag</b>	C-His

## Properties

<b>Purity</b>	> 95 % as determined by reducing SDS-PAGE.
<b>Endotoxin</b>	< 1.0 EU per µg of the protein as determined by the LAL method.
<b>Storage</b>	Store at < -20°C, stable for 6 months. Please minimize freeze-thaw cycles.
<b>Shipping</b>	This product is provided as liquid. It is shipped at frozen temperature with blue ice/gel packs. Upon receipt, store it immediately at < - 20°C.
<b>Formulation</b>	Supplied as a 0.2 µm filtered solution of 20mM Tris-HCl, 150mM NaCl, 0.05% Brij-35, 10% Glycerol, 1mM DTT, pH8.0.
<b>Reconstitution</b>	Not Applicable

## Data



> 95 % as determined by reducing SDS-PAGE.

## Background

Isocitrate Dehydrogenase [NADP] Cytoplasmic (IDH1) belongs to the isocitrate and isopropylmalate dehydrogenases family. IDH1 exists as a homodimer; binding one magnesium or manganese ion per subunit. Mutations of IDH1 have been shown to cause metaphyseal chondromatosis with aciduria and are involved in the development of glioma IDH plays a role in the regeneration of NADPH for intraperoxisomal reductions; such as the conversion of 2; 4-dienoyl-CoAs to 3-enoyl-CoAs; as well as in peroxisomal reactions that consume 2-oxoglutarate; namely the  $\alpha$ -hydroxylation of phytanic acid.

## For Research Use Only

A Reliable Research Partner in Life Science and Medicine

Toll-free: 1-888-852-8623

Web: [www.elabscience.com](http://www.elabscience.com)

Tel: 1-832-243-6086

Email: [techsupport@elabscience.com](mailto:techsupport@elabscience.com)

Fax: 1-832-243-6017