

Recombinant Human Butyrylcholinesterase/BCHE Protein (His Tag)



Catalog Number:PKSH033346

Note: Centrifuge before opening to ensure complete recovery of vial contents.

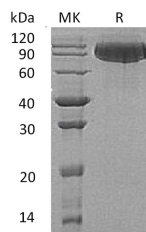
Description

Synonyms	Cholinesterase;Acylcholine Acylhydrolase;Butyrylcholine Esterase;Choline Esterase II;Pseudocholinesterase;BCHE;CHE1
Species	Human
Expression Host	HEK293 Cells
Sequence	Glu29-Leu602
Accession	P06276
Calculated Molecular Weight	66.1 kDa
Observed molecular weight	90 kDa
Tag	C-His

Properties

Purity	> 95 % as determined by reducing SDS-PAGE.
Endotoxin	< 1.0 EU per µg of the protein as determined by the LAL method.
Storage	Store at < -20°C, stable for 6 months. Please minimize freeze-thaw cycles.
Shipping	This product is provided as liquid. It is shipped at frozen temperature with blue ice/gel packs. Upon receipt, store it immediately at < - 20°C.
Formulation	Supplied as a 0.2 µm filtered solution of 20mM Tris-HCl, 150mM NaCl, pH 7.5.
Reconstitution	Not Applicable

Data



> 95 % as determined by reducing SDS-PAGE.

Background

Butyrylcholine Esterase (BCHE) is a secreted protein that belongs to the type-B carboxylesterase/lipase family. BCHE is a major acetylcholine hydrolyzing enzyme in the circulation. It is detected in blood plasma and present in most cells except erythrocytes. BCHE is an esterase with broad substrate specificity. BCHE can contribute to the inactivation of the neurotransmitter acetylcholine. BCHE can degrade a large number of neurotoxic organophosphate esters. Thus, it plays important pharmacological and toxicological roles and is thought to be involved in the pathological progression. Defects in BCHE are the cause of butyrylcholinesterase deficiency (BChE deficiency) which is a metabolic disorder characterized by prolonged apnoea after the use of certain anesthetic drugs, including the muscle relaxants succinylcholine and other ester local anesthetics.

For Research Use Only

A Reliable Research Partner in Life Science and Medicine

Toll-free: 1-888-852-8623

Web: www.elabscience.com

Tel: 1-832-243-6086

Email: techsupport@elabscience.com

Fax: 1-832-243-6017