

## Recombinant Human XPNPEP2 Protein (His Tag)

**Catalog No.** PKSH033349

**Note:** Centrifuge before opening to ensure complete recovery of vial contents.

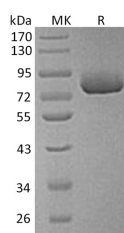
### Description

<b>Synonyms</b>	Xaa-Pro Aminopeptidase 2;Aminoacylproline Aminopeptidase;Membrane-Bound Aminopeptidase P;Membrane-Bound APP;Membrane-Bound AmP;mAmP;X-Pro Aminopeptidase 2;XPNPEP2
<b>Species</b>	Human
<b>Expression Host</b>	HEK293 Cells
<b>Sequence</b>	His22-Ala650
<b>Accession</b>	O43895
<b>Calculated Molecular Weight</b>	71.6 kDa
<b>Observed molecular weight</b>	78 kDa
<b>Tag</b>	C-His
<b>Bioactivity</b>	Not validated for activity

### Properties

<b>Purity</b>	> 95 % as determined by reducing SDS-PAGE.
<b>Endotoxin</b>	< 1.0 EU per µg of the protein as determined by the LAL method.
<b>Storage</b>	Store at < -20°C, stable for 6 months. Please minimize freeze-thaw cycles.
<b>Shipping</b>	This product is provided as liquid. It is shipped at frozen temperature with blue ice/gel packs. Upon receipt, store it immediately at < - 20°C.
<b>Formulation</b>	Supplied as a 0.2 µm filtered solution of 20mM Tris-HCl, 150mM NaCl, pH 8.0.
<b>Reconstitution</b>	Not Applicable

### Data



> 95 % as determined by reducing SDS-PAGE.

### Background

Xaa-Pro aminopeptidase 2 (XPNPEP2) belongs to the peptidase M24B family of metalloproteases. Human XPNPEP2 is widely expressed in various tissues; such as kidney; lung; heart; placenta; liver; small intestine and colon. However; it doesn't express in brain; skeletal muscle; pancreas; spleen; thymus; prostate; testis and ovary. XPNPEP2 is a Homotrimer which binds 2 manganese ions per subunit. The metalloprotease XPNPEP2 may play a role in the inflammatory process

### For Research Use Only

and other reactions produced in response to injury or infection and the metabolism of the vasodilator bradykinin.