

# Recombinant Human C1QBP Protein (aa 74-282, His Tag)



Catalog Number:PKSH033350

**Note:** Centrifuge before opening to ensure complete recovery of vial contents.

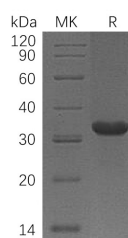
## Description

<b>Synonyms</b>	Complement Component 1 Q Subcomponent-Binding Protein Mitochondrial;ASF/SF2-Associated Protein p32;Glycoprotein gC1qBP;C1qBP;Hyaluronan-Binding Protein 1;Mitochondrial Matrix Protein p32;gC1q-R Protein;p33;C1QBP;GC1QBP;HABP1;SF2P32;gC1qR
<b>Species</b>	Human
<b>Expression Host</b>	E.coli
<b>Sequence</b>	Leu74-Gln282
<b>Accession</b>	Q07021
<b>Calculated Molecular Weight</b>	24.9 kDa
<b>Observed molecular weight</b>	34 kDa
<b>Tag</b>	C-His

## Properties

<b>Purity</b>	> 95 % as determined by reducing SDS-PAGE.
<b>Endotoxin</b>	< 1.0 EU per µg of the protein as determined by the LAL method.
<b>Storage</b>	Store at < -20°C, stable for 6 months. Please minimize freeze-thaw cycles.
<b>Shipping</b>	This product is provided as liquid. It is shipped at frozen temperature with blue ice/gel packs. Upon receipt, store it immediately at < -20°C.
<b>Formulation</b>	Supplied as a 0.2 µm filtered solution of 20mM Tris-HCl, 20% Glycerol, 1mM DTT, pH 7.5.
<b>Reconstitution</b>	Not Applicable

## Data



> 95 % as determined by reducing SDS-PAGE.

## Background

Complement Component 1Q Subcomponent-Binding Protein (C1QBP) is a nucleus protein that belongs to the MAM33 family. C1QBP is known to bind to the globular heads of C1q molecules and inhibit C1 activation. Mitochondrial C1QBP is a critical mediator of p14ARF-induced apoptosis. C1QBP functions as a chemotactic factor for immature dendritic cells, and migration is mediated through ligation of both C1QBP and cC1qR/CR. C1QBP overexpression successfully blocks mRNA accumulation from the adenovirus major late transcription unit (MLTU) and stimulates RNA polymerase II carboxy-terminal domain phosphorylation in virus-infected cells.

## For Research Use Only

A Reliable Research Partner in Life Science and Medicine

Toll-free: 1-888-852-8623

Web: [www.elabscience.com](http://www.elabscience.com)

Tel: 1-832-243-6086

Email: [techsupport@elabscience.com](mailto:techsupport@elabscience.com)

Fax: 1-832-243-6017