

Recombinant Human SELL Protein (His Tag)

Catalog No. PKSH033351

Note: Centrifuge before opening to ensure complete recovery of vial contents.

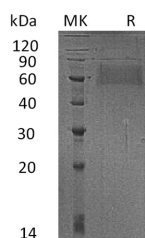
Description

Synonyms	L-selectin;CD62 antigen-like family member L;Leukocyte adhesion molecule 1;Leukocyte surface antigen Leu-8;Leukocyte-endothelial cell adhesion molecule 1;Lymph node homing receptor;TQ1;gp90-MEL;LNHR;LYAM1;CD62L;LAM1;LECAM1;LEU8;LSEL;LYAM1;PLNHR
Species	Human
Expression Host	HEK293 Cells
Sequence	Trp39-Asn332
Accession	P14151
Calculated Molecular Weight	34.0 kDa
Observed molecular weight	60 kDa
Tag	C-His
Bioactivity	Not validated for activity

Properties

Purity	> 95 % as determined by reducing SDS-PAGE.
Endotoxin	< 1.0 EU per µg of the protein as determined by the LAL method.
Storage	Generally, lyophilized proteins are stable for up to 12 months when stored at -20 to -80°C. Reconstituted protein solution can be stored at 4-8°C for 2-7 days. Aliquots of reconstituted samples are stable at < -20°C for 3 months.
Shipping	This product is provided as lyophilized powder which is shipped with ice packs.
Formulation	Lyophilized from a 0.2 µm filtered solution of PBS, pH7.4. Normally 5 % - 8 % trehalose, mannitol and 0.01% Tween80 are added as protectants before lyophilization. Please refer to the specific buffer information in the printed manual.
Reconstitution	Please refer to the printed manual for detailed information.

Data



> 95 % as determined by reducing SDS-PAGE.

For Research Use Only

Background

SELL contains one C-type lectin domain; one EGF-like domain and two Sushi (CCP/SCR) domains. SELL is expressed in B-cell lines and T-lymphocytes. SELL functions as a cell surface adhesion protein and mediates the adherence of lymphocytes to endothelial cells of high endothelial venules in peripheral lymph nodes. In addition; SELL also promotes initial tethering and rolling of leukocytes in endothelia.

For Research Use Only