

# Recombinant Human SELL Protein (His Tag)

Catalog Number:PKSH033351



**Note:** Centrifuge before opening to ensure complete recovery of vial contents.

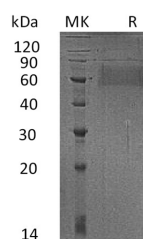
## Description

|                                    |   |
|------------------------------------|---|
| <b>Synonyms</b>                    | L-selectin;CD62 antigen-like family member L;Leukocyte adhesion molecule 1;Leukocyte surface antigen Leu-8;Leukocyte-endothelial cell adhesion molecule 1;Lymph node homing receptor;TQ1;gp90-MEL;LNHR;LYAM1;CD62L;LAM1;L ECAM1;LEU8;LSEL;LYAM1;PLNHR |
| <b>Species</b>                     | Human   |
| <b>Expression Host</b>             | HEK293 Cells  |
| <b>Sequence</b>                    | Trp39-Asn332  |
| <b>Accession</b>                   | P14151  |
| <b>Calculated Molecular Weight</b> | 34.0 kDa  |
| <b>Observed molecular weight</b>   | 60 kDa  |
| <b>Tag</b>                         | C-His   |

## Properties

|                       |  |
|-----------------------|--|
| <b>Purity</b>         | > 95 % as determined by reducing SDS-PAGE.   |
| <b>Endotoxin</b>      | < 1.0 EU per µg of the protein as determined by the LAL method.  |
| <b>Storage</b>        | Generally, lyophilized proteins are stable for up to 12 months when stored at -20 to -80°C. Reconstituted protein solution can be stored at 4-8°C for 2-7 days. Aliquots of reconstituted samples are stable at < -20°C for 3 months.            |
| <b>Shipping</b>       | This product is provided as lyophilized powder which is shipped with ice packs.  |
| <b>Formulation</b>    | Lyophilized from a 0.2 µm filtered solution of PBS, pH7.4.<br>Normally 5 % - 8 % trehalose, mannitol and 0.01% Tween80 are added as protectants before lyophilization.<br>Please refer to the specific buffer information in the printed manual. |
| <b>Reconstitution</b> | Please refer to the printed manual for detailed information.   |

## Data



> 95 % as determined by reducing SDS-PAGE.

## Background

SELL contains one C-type lectin domain; one EGF-like domain and two Sushi (CCP/SCR) domains. SELL is expressed in B-cell lines and T-lymphocytes. SELL functions as a cell surface adhesion protein and mediates the adherence of lymphocytes to endothelial cells of high endothelial venules in peripheral lymph nodes. In addition; SELL also promotes initial tethering and rolling of leukocytes in endothelia.

## For Research Use Only

A Reliable Research Partner in Life Science and Medicine

Toll-free: 1-888-852-8623

Web: [www.elabscience.com](http://www.elabscience.com)

Tel: 1-832-243-6086

Email: [techsupport@elabscience.com](mailto:techsupport@elabscience.com)

Fax: 1-832-243-6017