

Recombinant Human ST6GAL1 Protein (His Tag)

Catalog Number:PKSH033362



Note: Centrifuge before opening to ensure complete recovery of vial contents.

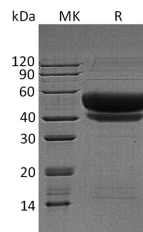
Description

| | |
|------------------------------------|--|
| Synonyms | Beta-Galactoside Alpha-2;6-Sialyltransferase 1;Alpha 2;6-ST 1;B-Cell Antigen CD75;CMP-N-Acetylneuraminate-Beta-Galactosamide-Alpha-2;6-Sialyltransferase 1;ST6Gal I;ST6GalII;Sialyltransferase 1;ST6GAL1;SIAT1 |
| Species | Human |
| Expression Host | HEK293 Cells |
| Sequence | Lys27-Cys406 |
| Accession | P15907 |
| Calculated Molecular Weight | 44.6 kDa |
| Observed molecular weight | 41-60 kDa |
| Tag | C-His |

Properties

| | |
|-----------------------|--|
| Purity | > 95 % as determined by reducing SDS-PAGE. |
| Endotoxin | < 1.0 EU per µg of the protein as determined by the LAL method. |
| Storage | Store at < -20°C, stable for 6 months. Please minimize freeze-thaw cycles. |
| Shipping | This product is provided as liquid. It is shipped at frozen temperature with blue ice/gel packs. Upon receipt, store it immediately at < - 20°C. |
| Formulation | Supplied as a 0.2 µm filtered solution of 20mM Tris-HCl, 150mM NaCl, pH 8.0. |
| Reconstitution | Not Applicable |

Data



> 95 % as determined by reducing SDS-PAGE.

Background

The ST6GAL1 gene encodes β -Galactosamide α -2;6-Sialyltransferase 1. It is a type II membrane protein and is localized to the trans-Golgi network. It catalyzes 2;6-sialylation of Gal β 1;4-GlcNAc structures on N-glycans. ST6GAL1 is highly expressed in the liver and other tissues. ST6GAL1 deficiency causes abnormalities in B-cell immunoreactivity. The expression and activity of ST6GAL1 are associated with tumor metastasis in breast and colon cancers. The majority of ST6GAL1 in the liver is cleaved and secreted into the serum and may be used as a biomarker for hepatitis diseases.

For Research Use Only

A Reliable Research Partner in Life Science and Medicine

Toll-free: 1-888-852-8623

Web: www.elabscience.com

Tel: 1-832-243-6086

Email: techsupport@elabscience.com

Fax: 1-832-243-6017