

# Recombinant Human Chymotrypsin C Protein (His Tag)

Catalog Number:PKSH033366



**Note:** Centrifuge before opening to ensure complete recovery of vial contents.

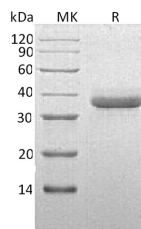
## Description

<b>Synonyms</b>	Chymotrypsin-C;Caldecrin;CTRC;CLCR
<b>Species</b>	Human
<b>Expression Host</b>	HEK293 Cells
<b>Sequence</b>	Cys17-Leu268
<b>Accession</b>	Q99895
<b>Calculated Molecular Weight</b>	29.0 kDa
<b>Observed molecular weight</b>	33-40 kDa
<b>Tag</b>	C-His

## Properties

<b>Purity</b>	> 95 % as determined by reducing SDS-PAGE.
<b>Endotoxin</b>	< 1.0 EU per µg of the protein as determined by the LAL method.
<b>Storage</b>	Store at < -20°C, stable for 6 months. Please minimize freeze-thaw cycles.
<b>Shipping</b>	This product is provided as liquid. It is shipped at frozen temperature with blue ice/gel packs. Upon receipt, store it immediately at < - 20°C.
<b>Formulation</b>	Supplied as a 0.2 µm filtered solution of 20mM Tris-Hcl, 150mM NaCl , pH7.5.
<b>Reconstitution</b>	Not Applicable

## Data



> 95 % as determined by reducing SDS-PAGE.

## Background

Chymotrypsin C (CTRC) is a member of the peptidase S1 family. CTRC is a serum calcium-decreasing factor that has chymotrypsin-like protease activity. CTRC has broad substrate specificity; but prefers to cleave on the carboxyl side of hydrophobic residues. CTRC is expressed primarily in the pancreas; and is secreted into the digestive tract. CTRC plays a protective role in the pancreas by mitigating premature trypsinogen activation through degradation. It has been proposed that CTRC is a key regulator of digestive zymogen activation and is a physiological coactivator of digestive carboxypeptidases proCPA1 and proCPA2. The mutation of CTRC gene encodes the digestive enzyme CTRC contribute to the development of pancreatitis.

## For Research Use Only

A Reliable Research Partner in Life Science and Medicine

Toll-free: 1-888-852-8623

Web: [www.elabscience.com](http://www.elabscience.com)

Tel: 1-832-243-6086

Email: [techsupport@elabscience.com](mailto:techsupport@elabscience.com)

Fax: 1-832-243-6017