

Recombinant Human SULT1A3 Protein (His Tag)

Catalog Number:PKSH033370



Note: Centrifuge before opening to ensure complete recovery of vial contents.

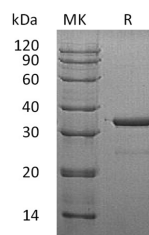
Description

Synonyms	Sulfotransferase 1A3/1A4;ST1A3/ST1A4;Aryl Sulfotransferase 1A3/1A4;Catecholamine-Sulfating Phenol Sulfotransferase;HAST3;M-PST;Monoamine-Sulfating Phenol Sulfotransferase;Placental Estrogen Sulfotransferase;Sulfotransferase Monoamine-Preferring;Thermolabile Phenol Sulfotransferase;TL-PST;SULT1A3;STM;SULT1A4;HAST;HAST3;M-PST;ST1A5;STM
Species	Human
Expression Host	E.coli
Sequence	Met 1-Leu295
Accession	P0DMM9
Calculated Molecular Weight	35.6 kDa
Observed molecular weight	35 kDa
Tag	N-His

Properties

Purity	> 95 % as determined by reducing SDS-PAGE.
Endotoxin	< 1.0 EU per µg of the protein as determined by the LAL method.
Storage	Store at < -20°C, stable for 6 months. Please minimize freeze-thaw cycles.
Shipping	This product is provided as liquid. It is shipped at frozen temperature with blue ice/gel packs. Upon receipt, store it immediately at < -20°C.
Formulation	Supplied as a 0.2 µm filtered solution of 20mM Tris-HCl, 6% Sucrose, 4% Mannitol, 0.05% Tween80, pH 8.5.
Reconstitution	Not Applicable

Data



> 95 % as determined by reducing SDS-PAGE.

Background

Sulfotransferase 1A3/1A4 (SULT1A3) is 295 amino acids in length and localizes to the cytoplasm. It is a member of the Sulfotransferase 1 family. SULT1A3 can be found in the liver, colon, kidney, lung, brain, spleen, small intestine, placenta, and leukocytes. SULT1A3 exists as a homodimer and it catalyzes the sulfation of phenolic monoamines, such as dopamine, norepinephrine and serotonin, and phenolic and catecholic drugs.

For Research Use Only

A Reliable Research Partner in Life Science and Medicine

Toll-free: 1-888-852-8623

Web: www.elabscience.com

Tel: 1-832-243-6086

Email: techsupport@elabscience.com

Fax: 1-832-243-6017