

# Recombinant Human CADM3 Protein (His Tag)

Catalog Number:PKSH033376



**Note:** Centrifuge before opening to ensure complete recovery of vial contents.

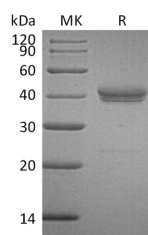
## Description

<b>Synonyms</b>	Cell Adhesion Molecule 3;Brain Immunoglobulin Receptor;Immunoglobulin Superfamily Member 4B;IGSF4B;Nectin-Like Protein 1;NECL-1;Synaptic Cell Adhesion Molecule 3;SynCAM3;TSLC1-Like Protein 1;TSL1;CADM3;IGSF4B;NECL1;SYNCAM3;TSL1
<b>Species</b>	Human
<b>Expression Host</b>	HEK293 Cells
<b>Sequence</b>	Asn25-His330
<b>Accession</b>	Q8N126
<b>Calculated Molecular Weight</b>	34.7 kDa
<b>Observed molecular weight</b>	35-42 kDa
<b>Tag</b>	C-His

## Properties

<b>Purity</b>	> 95 % as determined by reducing SDS-PAGE.
<b>Endotoxin</b>	< 1.0 EU per µg of the protein as determined by the LAL method.
<b>Storage</b>	Generally, lyophilized proteins are stable for up to 12 months when stored at -20 to -80°C. Reconstituted protein solution can be stored at 4-8°C for 2-7 days. Aliquots of reconstituted samples are stable at < -20°C for 3 months.
<b>Shipping</b>	This product is provided as lyophilized powder which is shipped with ice packs.
<b>Formulation</b>	Lyophilized from a 0.2 µm filtered solution of 20mM PB, 150mM NaCl, pH 7.2. Normally 5 % - 8 % trehalose, mannitol and 0.01% Tween80 are added as protectants before lyophilization. Please refer to the specific buffer information in the printed man
<b>Reconstitution</b>	Please refer to the printed manual for detailed information.

## Data



> 95 % as determined by reducing SDS-PAGE.

## Background

Cell Adhesion Molecular Proteins are proteins located on the cell surface involved with the binding with other cells or with the extracellular matrix in the cell adhesion process. These proteins consists of three domains, an transmembrane domain, an intracellular domain that interacts with the cytoskeleton, and an extracellular domain that interacts with other CAMs of the same kind or with other CAMs or the extracellular matrix. Cell Adhesion Molecular 3 (CADM3) is a neural tissue-specific member of the nectin-like family of immunoglobulin superfamily. CADM3 interacts with EPB41L1 may

## For Research Use Only

A Reliable Research Partner in Life Science and Medicine

Toll-free: 1-888-852-8623

Web: [www.elabscience.com](http://www.elabscience.com)

Tel: 1-832-243-6086

Email: [techsupport@elabscience.com](mailto:techsupport@elabscience.com)

Fax: 1-832-243-6017

# Recombinant Human CADM3 Protein (His Tag)

Catalog Number:PKSH033376



regulate structure or function of cell-cell junctions. CADM3 has both calcium-independent homophilic cell-cell adhesion activity and calcium-independent heterophilic cell-cell adhesion activity with IGSF4, PVRL1 and PVRL3.

---

## For Research Use Only

A Reliable Research Partner in Life Science and Medicine

Toll-free: 1-888-852-8623

Tel: 1-832-243-6086

Fax: 1-832-243-6017

Web: [www.elabscience.com](http://www.elabscience.com)

Email: [techsupport@elabscience.com](mailto:techsupport@elabscience.com)