

Recombinant Human SH2D1A/SAP Protein (His Tag)

Catalog Number:PKSH033379



Note: Centrifuge before opening to ensure complete recovery of vial contents.

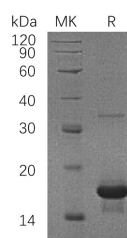
Description

Synonyms	SH2 Domain-Containing Protein 1A;Duncan Disease SH2-Protein;Signaling Lymphocytic Activation Molecule-Associated Protein;SLAM-Associated Protein;T-Cell Signal Transduction Molecule SAP;SH2D1A;DSHP;EBVS;IMD5;LYP;MTCP1 ;SAP/SH2D1A;XLP;XLPD;XLPD1
Species	Human
Expression Host	E.coli
Sequence	Met 1-Pro128
Accession	O60880
Calculated Molecular Weight	16.4 kDa
Observed molecular weight	16 kDa
Tag	N-His

Properties

Purity	> 95 % as determined by reducing SDS-PAGE.
Endotoxin	< 1.0 EU per µg of the protein as determined by the LAL method.
Storage	Store at < -20°C, stable for 6 months. Please minimize freeze-thaw cycles.
Shipping	This product is provided as liquid. It is shipped at frozen temperature with blue ice/gel packs. Upon receipt, store it immediately at < - 20°C.
Formulation	Supplied as a 0.2 µm filtered solution of 20mM Tris-HCl, 150mM NaCl, 10% Glycerol, pH 7.5.
Reconstitution	Not Applicable

Data



> 95 % as determined by reducing SDS-PAGE.

Background

SH2 Domain-Containing Protein 1A,(SH2D1A) contains one SH2 domain and a short tail and is localized in the cytoplasm. SH2D1A is expressed at a high level in the thymus and the lung, with lower expression levels in the spleen and the liver. SH2D1A acts as an inhibitor of the signaling lymphocyte activation molecule (SLAM) self-association. In addition, SH2D1A mediates interaction between FYN and SLAMF1. It is also thought to regulate the activity of the neurotrophin receptors NTRK1, NTRK2 and NTRK3.

For Research Use Only

A Reliable Research Partner in Life Science and Medicine

Toll-free: 1-888-852-8623

Web: www.elabscience.com

Tel: 1-832-243-6086

Email: techsupport@elabscience.com

Fax: 1-832-243-6017