

Recombinant Human CD2 Protein (His Tag)

Catalog Number:PKSH033387



Note: Centrifuge before opening to ensure complete recovery of vial contents.

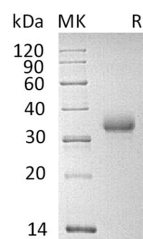
Description

Synonyms	T-cell surface antigen CD2;Erythrocyte receptor;LFA-2;LFA-3 receptor;Rosette receptor;T-cell surface antigen T11/Leu-5;SRBC;T11
Species	Human
Expression Host	HEK293 Cells
Sequence	Lys25-Asp209
Accession	P06729
Calculated Molecular Weight	22.3 kDa
Observed molecular weight	34 kDa
Tag	C-His

Properties

Purity	> 95 % as determined by reducing SDS-PAGE.
Endotoxin	< 1.0 EU per µg of the protein as determined by the LAL method.
Storage	Generally, lyophilized proteins are stable for up to 12 months when stored at -20 to -80°C. Reconstituted protein solution can be stored at 4-8°C for 2-7 days. Aliquots of reconstituted samples are stable at < -20°C for 3 months.
Shipping	This product is provided as lyophilized powder which is shipped with ice packs.
Formulation	Lyophilized from a 0.2 µm filtered solution of 20mM PB,150mM NaCl,pH7.4. Normally 5 % - 8 % trehalose, mannitol and 0.01 % Tween80 are added as protectants before lyophilization. Please refer to the specific buffer information in the printed manual
Reconstitution	Please refer to the printed manual for detailed information.

Data



> 95 % as determined by reducing SDS-PAGE.

Background

T-cell surface antigen CD2 is also known as Erythrocyte receptor, LFA-2, LFA-3 receptor, Rosette receptor, T-cell surface antigen T11/Leu-5. It is a protein that in humans is encoded by the CD2 gene. It is a single-pass type I membrane protein. contains 1 Ig-like C2-type domain and 1 Ig-like V-type domain. T-cell surface antigen CD2 interacts with lymphocyte function-associated antigen (LFA-3) and CD48/BCM1 to mediate adhesion between T-cells and other cell types. It is implicated in the triggering of T-cells, the cytoplasmic domain is implicated in the signaling function.

For Research Use Only

A Reliable Research Partner in Life Science and Medicine

Toll-free: 1-888-852-8623

Web: www.elabscience.com

Tel: 1-832-243-6086

Email: techsupport@elabscience.com

Fax: 1-832-243-6017