

# Recombinant Human CD3 ε/CD3E Protein (His Tag)

Catalog Number:PKSH033388



**Note:** Centrifuge before opening to ensure complete recovery of vial contents.

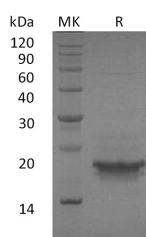
## Description

<b>Synonyms</b>	T-Cell Surface Glycoprotein CD3 Epsilon Chain;T-Cell Surface Antigen T3/Leu-4 Epsilon Chain;CD3ε;CD3E;T3E;CD3 epsilon;IMD18
<b>Species</b>	Human
<b>Expression Host</b>	HEK293 Cells
<b>Sequence</b>	Asp23-Asp126
<b>Accession</b>	P07766
<b>Calculated Molecular Weight</b>	12.8 kDa
<b>Observed molecular weight</b>	15-21 kDa
<b>Tag</b>	C-His
<b>Bioactivity</b>	Immobilized Human CD3E-His at 10 ug/ml (100 ul/wel)can bind Human Anti-CD3 mAb. The ED50 of Recombinant Human Anti-CD3 mAb is 3-15 ng/ml.

## Properties

<b>Purity</b>	> 95 % as determined by reducing SDS-PAGE.
<b>Endotoxin</b>	< 1.0 EU per µg of the protein as determined by the LAL method.
<b>Storage</b>	Generally, lyophilized proteins are stable for up to 12 months when stored at -20 to -80°C. Reconstituted protein solution can be stored at 4-8°C for 2-7 days. Aliquots of reconstituted samples are stable at < -20°C for 3 months.
<b>Shipping</b>	This product is provided as lyophilized powder which is shipped with ice packs.
<b>Formulation</b>	Lyophilized from a 0.2 µm filtered solution of PBS, pH 7.4. Normally 5 % - 8 % trehalose, mannitol and 0.01% Tween80 are added as protectants before lyophilization. Please refer to the specific buffer information in the printed manual.
<b>Reconstitution</b>	Please refer to the printed manual for detailed information.

## Data



> 95 % as determined by reducing SDS-PAGE.

## Background

T-Cell Surface Glycoprotein CD3 ε Chain (CD3ε) is a single-pass type I membrane protein. CD3ε contains 1 Ig-like (immunoglobulin-like) domain and 1 ITAM domain. CD3ε is a polypeptide encoded by the CD3E gene on chromosome 11 in humans. The T cell receptor-CD3 complex (TCR/CD3 complex) is involved in T-cell development and several intracellular signal-transduction pathways. This complex is critical for T-cell development and function, and represents one of the most complex transmembrane receptors. The T cell receptor-CD3 complex is unique in having ten cytoplasmic

## For Research Use Only

A Reliable Research Partner in Life Science and Medicine

Toll-free: 1-888-852-8623

Web: [www.elabscience.com](http://www.elabscience.com)

Tel: 1-832-243-6086

Email: [techsupport@elabscience.com](mailto:techsupport@elabscience.com)

Fax: 1-832-243-6017

# Recombinant Human CD3 $\epsilon$ /CD3E Protein (His Tag)

Catalog Number:PKSH033388



immunoreceptor tyrosine-based activation motifs (ITAMs). TCR/CD3 complex plays an important role in coupling antigen recognition to several intracellular signal-transduction pathways.

---

## For Research Use Only

A Reliable Research Partner in Life Science and Medicine

Toll-free: 1-888-852-8623

Web: [www.elabscience.com](http://www.elabscience.com)

Tel: 1-832-243-6086

Email: [techsupport@elabscience.com](mailto:techsupport@elabscience.com)

Fax: 1-832-243-6017