

## Recombinant Human IL17RA Protein (Fc Tag)

**Catalog No.** PKSH033395

**Note:** Centrifuge before opening to ensure complete recovery of vial contents.

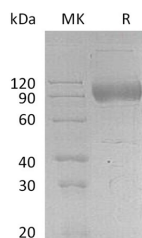
### Description

<b>Synonyms</b>	CD127;CDW127;IL-17R;IL-17R-alpha;IL7RA;ILRA;IL-17RA;IL-17 R alpha;Interleukin-17 receptor A
<b>Species</b>	Human
<b>Expression Host</b>	HEK293 Cells
<b>Sequence</b>	Leu33-Trp320
<b>Accession</b>	Q96F46
<b>Calculated Molecular Weight</b>	60.6 kDa
<b>Observed molecular weight</b>	90-120 kDa
<b>Tag</b>	C-Fc
<b>Bioactivity</b>	Immobilized Human IL-17RA-Fc at 2µg/ml (100 µl/well) can bind Anti-Human IL-17RA mAb. The ED50 of Anti-Human IL-17RA mAb is 13.50 ng/ml.

### Properties

<b>Purity</b>	> 90 % as determined by reducing SDS-PAGE.
<b>Endotoxin</b>	< 1.0 EU per µg of the protein as determined by the LAL method.
<b>Storage</b>	Generally, lyophilized proteins are stable for up to 12 months when stored at -20 to -80°C. Reconstituted protein solution can be stored at 4-8°C for 2-7 days. Aliquots of reconstituted samples are stable at < -20°C for 3 months.
<b>Shipping</b>	This product is provided as lyophilized powder which is shipped with ice packs.
<b>Formulation</b>	Lyophilized from a 0.2 µm filtered solution of PBS, pH 7.4. Normally 5 % - 8 % trehalose, mannitol and 0.01% Tween80 are added as protectants before lyophilization. Please refer to the specific buffer information in the printed manual.
<b>Reconstitution</b>	Please refer to the printed manual for detailed information.

### Data



> 90 % as determined by reducing SDS-PAGE.

### Background

#### For Research Use Only

Interleukin 17A (IL17A) is a proinflammatory cytokine secreted by activated T-lymphocytes. It is a potent inducer of the maturation of CD34-positive hematopoietic precursors into neutrophils. The transmembrane protein encoded by this gene (interleukin 17A receptor; IL17RA) is a ubiquitous type I membrane glycoprotein that binds with low affinity to interleukin 17A. Interleukin 17A and its receptor play a pathogenic role in many inflammatory and autoimmune diseases such as rheumatoid arthritis. Like other cytokine receptors; this receptor likely has a multimeric structure.