

Recombinant Human GLIPR1 Protein (His Tag)

Catalog Number:PKSH033396



Note: Centrifuge before opening to ensure complete recovery of vial contents.

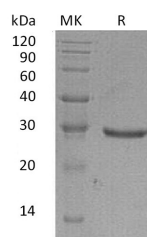
Description

Synonyms	Glioma Pathogenesis-Related Protein 1;GliPR 1;Protein RTVP-1;GLIPR1;GLIPR;RTVP1
Species	Human
Expression Host	HEK293 Cells
Sequence	Asn22-Arg232
Accession	P48060
Calculated Molecular Weight	25.2 kDa
Observed molecular weight	25-30 kDa
Tag	C-His

Properties

Purity	> 95 % as determined by reducing SDS-PAGE.
Endotoxin	< 1.0 EU per µg of the protein as determined by the LAL method.
Storage	Generally, lyophilized proteins are stable for up to 12 months when stored at -20 to -80°C. Reconstituted protein solution can be stored at 4-8°C for 2-7 days. Aliquots of reconstituted samples are stable at < -20°C for 3 months.
Shipping	This product is provided as lyophilized powder which is shipped with ice packs.
Formulation	Lyophilized from a 0.2 µm filtered solution of 20mM PB, 150mM NaCl, pH 7.4. Normally 5 % - 8 % trehalose, mannitol and 0.01% Tween80 are added as protectants before lyophilization. Please refer to the specific buffer information in the printed man
Reconstitution	Please refer to the printed manual for detailed information.

Data



> 95 % as determined by reducing SDS-PAGE.

Background

Glioma Pathogenesis-Related Protein 1 (GLIPR1) is a member of the CRISP family. It is a single-pass membrane protein with 266 amino acids. GLIPR1 is highly expressed in the lung and kidney and lowly expressed in the heart and liver. It is also highly expressed in cell lines that are derived from nervous system tumors arising from glia; conversely; it is lowly expressed in non-glial-derived nervous system tumor cell lines. GLIPR1 is only expressed in brain tumor glioblastoma multiforme/astrocytoma and not expressed in other nervous system tumors nor normal adult or fetal tissues.

For Research Use Only

A Reliable Research Partner in Life Science and Medicine

Toll-free: 1-888-852-8623

Web: www.elabscience.com

Tel: 1-832-243-6086

Email: techsupport@elabscience.com

Fax: 1-832-243-6017