

Recombinant Human P4HB Protein (His Tag)

Catalog Number:PKSH033399



Note: Centrifuge before opening to ensure complete recovery of vial contents.

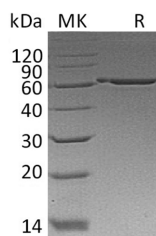
Description

Synonyms	DSI;ERBA2L;GIT;P4Hbeta;PDI;PDIA1;PHDB;PO4DB;PO4HB;PROHB;Protein Disulfide-Isomerase;PDI;Cellular Thyroid Hormone-Binding Protein;Prolyl 4-Hydroxylase Subunit Beta;p55
Species	Human
Expression Host	HEK293 Cells
Sequence	Asp18-Lys505
Accession	P07237
Calculated Molecular Weight	55.9 kDa
Observed molecular weight	65 kDa
Tag	C-His

Properties

Purity	> 95 % as determined by reducing SDS-PAGE.
Endotoxin	< 1.0 EU per µg of the protein as determined by the LAL method.
Storage	Store at < -20°C, stable for 6 months. Please minimize freeze-thaw cycles.
Shipping	This product is provided as liquid. It is shipped at frozen temperature with blue ice/gel packs. Upon receipt, store it immediately at < - 20°C.
Formulation	Supplied as a 0.2 µm filtered solution of PBS, pH7.4.
Reconstitution	Not Applicable

Data



> 95 % as determined by reducing SDS-PAGE.

Background

Protein Disulfide-Isomerase (P4HB) is an endoplasmic reticulum lumen protein that belongs to the protein disulfide isomerase family. P4HB contains two thioredoxin domains and catalyzes the formation, breakage, and rearrangement of -S-S- bonds in proteins. P4HB is involved in hydroxylation of prolyl residues in procollagen. P4HB has the ability to act as a chaperone that inhibits aggregation of misfolded proteins in a concentration-dependent manner. P4HB plays a role in both the influx and efflux of S-nitrosothiol-bound nitric oxide.

For Research Use Only

A Reliable Research Partner in Life Science and Medicine

Toll-free: 1-888-852-8623

Web: www.elabscience.com

Tel: 1-832-243-6086

Email: techsupport@elabscience.com

Fax: 1-832-243-6017