

Recombinant Human ASGR1/ASGPR1 Protein (His Tag)



Catalog Number:PKSH033403

Note: Centrifuge before opening to ensure complete recovery of vial contents.

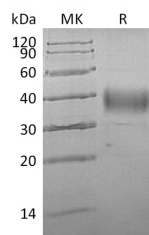
Description

Synonyms	Asialoglycoprotein Receptor 1;ASGP-R 1;ASGPR 1;C-Type Lectin Domain Family 4 Member H1;Hepatic Lectin H1;HL-1;ASGR1;CLEC4H1
Species	Human
Expression Host	HEK293 Cells
Sequence	Gln62-Ile291
Accession	P07306
Calculated Molecular Weight	27.4 kDa
Observed molecular weight	34-48 kDa
Tag	C-His

Properties

Purity	> 95 % as determined by reducing SDS-PAGE.
Endotoxin	< 1.0 EU per µg of the protein as determined by the LAL method.
Storage	Generally, lyophilized proteins are stable for up to 12 months when stored at -20 to -80°C. Reconstituted protein solution can be stored at 4-8°C for 2-7 days. Aliquots of reconstituted samples are stable at < -20°C for 3 months.
Shipping	This product is provided as lyophilized powder which is shipped with ice packs.
Formulation	Lyophilized from a 0.2 µm filtered solution of 20mM PB, 150mM NaCl, pH 7.2. Normally 5 % - 8 % trehalose, mannitol and 0.01 % Tween80 are added as protectants before lyophilization. Please refer to the specific buffer information in the printed man
Reconstitution	Please refer to the printed manual for detailed information.

Data



> 95 % as determined by reducing SDS-PAGE.

Background

Asialoglycoprotein Receptor 1 (ASGPR1) is an endocytic recycling receptor; belongs to the long-form subfamily of the C-type/Ca²⁺-dependent lectin family. ASGPR consists of two noncovalently-linked subunits; ASGPR1 and ASGPR2. ASGPR1 mediates the endocytosis of plasma glycoproteins; recognizes terminal galactose and N-acetylgalactosamine units. When the ligand binds to ASGPR1; results in the complex is internalized and transported to a sorting organelle; then ASGPR1 and ligand can be disassociated; ASGPR1 returns to the cell membrane surface.

For Research Use Only

A Reliable Research Partner in Life Science and Medicine

Toll-free: 1-888-852-8623

Web: www.elabscience.com

Tel: 1-832-243-6086

Email: techsupport@elabscience.com

Fax: 1-832-243-6017