

## Recombinant Human Kallikrein 11/KLK11 Protein (His Tag)

**Catalog No.** PKSH033404

**Note:** Centrifuge before opening to ensure complete recovery of vial contents.

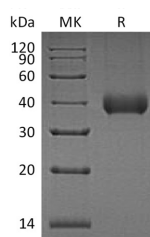
### Description

<b>Synonyms</b>	Kallikrein-11;hK11;Hippostasin;Serine Protease 20;Trypsin-Like Protease;KLK11;PRSS20;TLSP
<b>Species</b>	Human
<b>Expression Host</b>	HEK293 Cells
<b>Sequence</b>	Glu19-Asn250
<b>Accession</b>	AAH22068
<b>Calculated Molecular Weight</b>	26.3 kDa
<b>Observed molecular weight</b>	38 kDa
<b>Tag</b>	C-His
<b>Bioactivity</b>	Not validated for activity

### Properties

<b>Purity</b>	> 95 % as determined by reducing SDS-PAGE.
<b>Endotoxin</b>	< 1.0 EU per µg of the protein as determined by the LAL method.
<b>Storage</b>	Store at < -20°C, stable for 6 months. Please minimize freeze-thaw cycles.
<b>Shipping</b>	This product is provided as liquid. It is shipped at frozen temperature with blue ice/gel packs. Upon receipt, store it immediately at < -20°C.
<b>Formulation</b>	Supplied as a 0.2 µm filtered solution of 20mM Tris-HCl, 150mM NaCl, 2mM CaCl <sub>2</sub> , pH 8.0.
<b>Reconstitution</b>	Not Applicable

### Data



> 95 % as determined by reducing SDS-PAGE.

### Background

Human Kallikrein 11 (KLK11) is a member of tissue kallikrein family which are extracellular serine proteases consisting of 15 members. Two isoforms of KLK11 are differentially expressed. Isoform 1 is predominantly expressed in brain and isoform 2 is preferentially expressed in prostate. Isoform 1 consists of a signal peptide;a short pro peptide and the mature chain.Isoform 2 contains an extra 32 amino acid N terminal to full-length isoform 1.KLK11 is a novel marker for ovarian

### For Research Use Only

and prostate cancer carcinomas. KLK11 can be activated by thermolysin and is active against a thioester substrate.